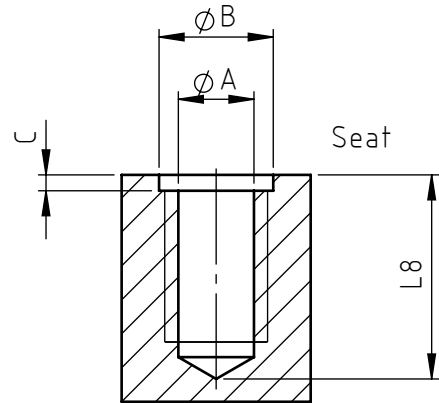
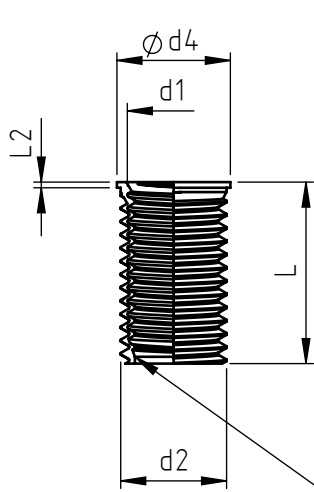


Application: on materials with threaded seats.  
 Assembly: by special equipment.



Area to be threaded during installation with rolling tap.

Features						Assembly			
Code	Internal thread d1	External thread d2	Length L	d4	L2	A	B	C	L8
SYT 04X070X08.50	M4x0,7	M4.8x0,7	8,0	5,5	0,75	4,20	5,8	1,7	11,8
SYT 05X080X10.50	M5x0,8	M5.9x0,8	10,0	7,0	0,75	5,05	7,1	1,8	14,2
SYT 06X100X12.50	M6x1,0	M7.2x1,0	12,0	8,0	0,75	6,25	8,1	1,8	17,2
SYT 08X125X16.50	M8x1,25	M9.5x1,25	16,2	10,6	0,75	8,20	10,7	2,1	22,2
SYT 10X150X20.50	M10x1,5	M11.8x1,5	20,0	12,6	0,75	10,30	12,9	2,2	27,3
SYT 12X125X24.50	M12x1,25	M13.6x1,25	24,0	14,0	0,75	12,10	14,1	2,1	30,2
SYT 12X175X24.50	M12x1,75	M14.2x1,75	24,0	15,0	0,75	12,70	15,4	2,8	32,3

Non binding dimensions, expressed in mm.  
 For other sizes not listed in the table, please contact Specialinsert® technical/sales department.

Standard
  On demand
  Not manufactured

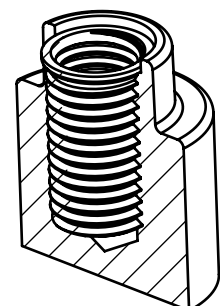
Material: stainless steel no. 1.4305

Finishing: natural

Example:

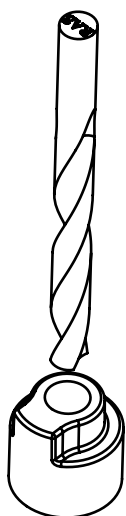
double-threaded synchronised bush,  
 M6 thread, length 12mm, in stainless steel:

SYT 06X100X12.50

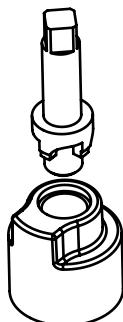


SPECIALINSERT COMMITS ITSELF TO CONTINUOUSLY IMPROVE ITS PRODUCTS. IT RESERVES THE RIGHT TO CHANGE THEIR TECHNICAL AND STRUCTURAL CHARACTERISTICS WITHOUT PRIOR NOTICE. ALL RIGHTS ARE RESERVED AND THE DUPLICATE, EVEN PARTIAL OF THESE DOCUMENTS, AS WELL AS ITS DISTRIBUTION TO THIRD PARTIES ARE FORBIDDEN, UNLESS OTHERWISE AND EXPRESSLY AUTHORIZED BY SPECIALINSERT.

ASSEMBLY INSTRUCTIONS



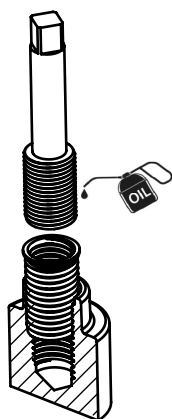
1 Drill according to table reference (dimensions A and L8)



2 Perform a seat for the bush collar (dimensions B and C)



3 Create the external thread to receive SYNC-TEC bush (dimension d2)



4 Insert the bush with rolling tap (dimension d1). The use of lubricating oil is recommended. At the end of the insertion, the rolling tap will complete the lower part of the internal thread, deforming the insert with a gripping effect.



5 Bush placed

Tools table for threaded seat creation (d2)

Code	Thread	External thread tap
SYT 04X070X08.50	M4	MM 04x70
SYT 05X080X10.50	M5	MM 05x80
SYT 06X100X12.50	M6	MM 06x100
SYT 08X125X16.50	M8	MM 08x125
SYT 10X150X20.50	M10	MM 10x150
SYT 12X125X24.50	M12x1.25	MM 12x125
SYT 12X175X24.50	M12x1.75	MM 12x175

SPECIALINSERT - COMMITS ITSELF TO CONTINUOUSLY IMPROVE ITS PRODUCTS. IT RESERVES THE RIGHT TO CHANGE THEIR TECHNICAL AND STRUCTURAL CHARACTERISTICS WITHOUT PRIOR NOTICE. ALL RIGHTS ARE RESERVED AND THE DUPLICATE, EVEN PARTIAL OF THESE DOCUMENTS, AS WELL AS ITS DISTRIBUTION TO THIRD PARTIES ARE FORBIDDEN, UNLESS OTHERWISE AND EXPRESSLY AUTHORIZED BY SPECIALINSERT.