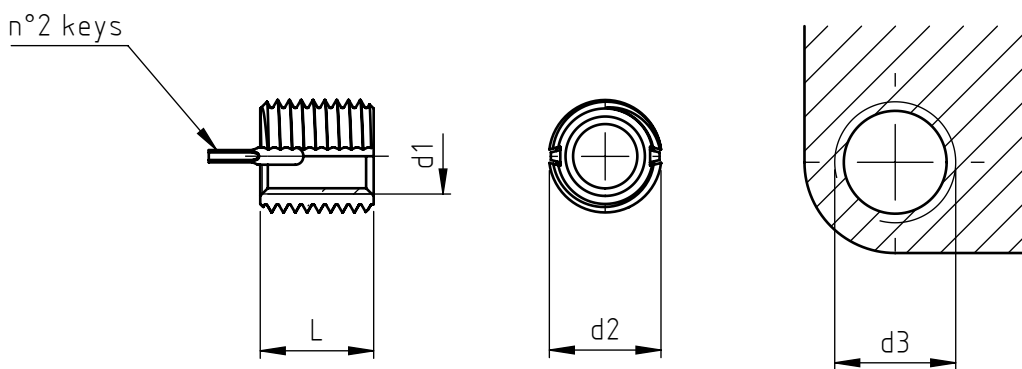


Application: on prepared material with threaded seat. Dowels are pressed into the receiving material to prevent unscrewing of the insert.

Assembly: by manual or machine tools. Dowels are inserted by pressure.



Product features				Installation				
stainless steel	d1 6H	d2 4g	L	hole preparation		Ø chamfer + 0,25 - 0	d3	
				Ø	tolerance		6H	depth min.
9010202040	M 2X0,40	M 4X0,70	3,00	3,4	+0,08 -0,025	4,1	M 4	4,0
9010225045	M2,5X0,45	M4,5X0,75	3,80	3,9	+0,08 -0,025	4,6	M4,5X0,75	5,0
9010203050	M 3X0,50	M 5X0,80	4,25	4,4	+0,08 -0,025	5,1	M 5	5,5
9010204070	M 4X0,70	M 6X0,75	5,25	5,5	+0,08 -0,025	6,1	M 6X0,75	6,5

Disassembly	
Ø hole	depth
2,8	2,00
3,0	2,00
3,5	2,25
4,6	2,50

For Dowel-Insert bushes compliant with MS e NAS, please contact the Specialinsert® tech/sales office.

Standard

On demand

Material: bushing in stainless AISI 303, keys in AISI 302

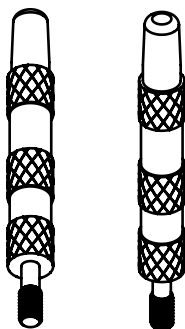
Finishing: passivation

Other threads, forms and types on request.

Non binding dimensions, expressed in mm.

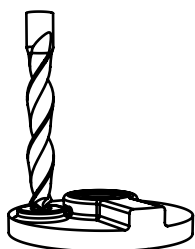
NEL COSTANTE IMPEGNO DI MIGLIORARE I PROPRI PRODOTTI LA SPECIALINSERT® SI RISERVA IL DIRITTO DI MODIFICARE LE CARATTERISTICHE TECNICHE E COSTRUTTIVE SENZA PREAVVISO. PROPRIETÀ E DIRITTI DEL DOCUMENTO SONO RISERVATI. NE È VIETATA LA RIPRODUZIONE, ANCHE PARZIALE E LA DIFFUSIONE A TERZI SENZA AUTORIZZAZIONE.

Complete tool



Complete tool	Dowel insert
905 0020.00	9010202040
905 0025.00	9010202045
905 0030.00	9010202050
905 0040.00	9010202070

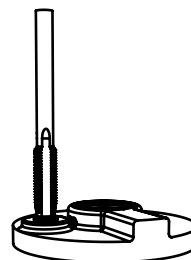
Assembly instructions:



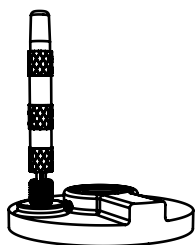
1: drill according to table reference.



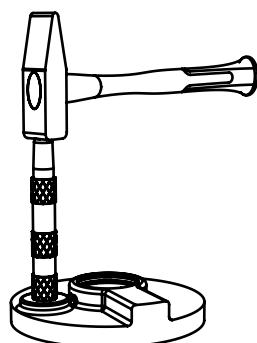
2: perform chamfer at 82°÷100°.



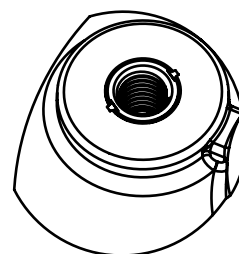
3: thread with standard male.



4: screw with bushing by hand or with manual installation tool at 0,25÷0,70 mm under the edge of the surface.



5: to drive the keys with a few hammer blows.



6: bushing positioned.