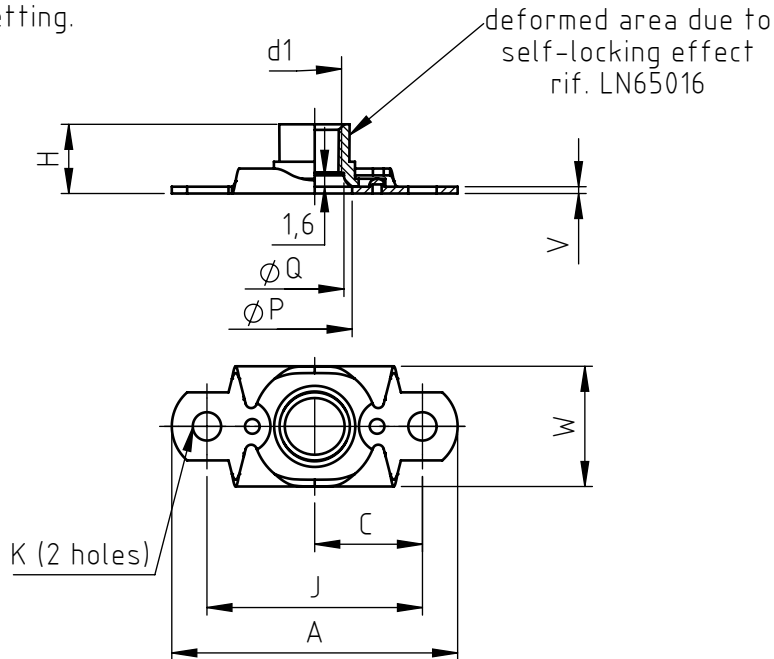


Application: resins, composite materials, others.
Assembly: by rivetting.

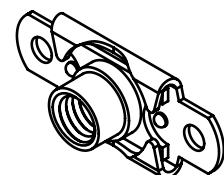


code	d1 thread	A max	C +0,1/ -0,1	H max	J +0,05/ -0,05	P min.	Q +0,05/ -0,05	V max	W max	K
OAF 0040.15.G2	M4x0,7 4H6H	23,2	8,5	5,2	17,0	5,5	4,2	0,7	10,6	2,5
OAF 0050.15.G2	M5x0,8 4H6H	25,2	9,5	6,2	19,0	6,5	5,2	0,7	11,0	2,5
OAF 0060.15.G2	M6x1,0 4H5H	29,2	11,0	7,2	22,0	7,5	6,2	0,7	13,1	3,3
OAF 0080.15.G2	M8x1,25 4H5H	33,2	13,0	8,2	26,0	9,5	8,4	0,85	15,5	3,3

Non binding dimensions, expressed in mm.

Standard On demand

Material : 25CrMo4 steel
Finishing : zinc-nickel (NO cadmium, NO chrome) + MoS2
low friction coating + blue identifying.
Tolerance d1 : respected in the useful thread section
Hardness : 44 HRC max
Resistance class : 1100 MPa
Temperature class : 235 °C



SPECIALINSERT® COMMITS ITSELF TO CONTINUOUSLY IMPROVE ITS PRODUCTS. IT RESERVES THE RIGHT TO CHANGE THEIR TECHNICAL AND STRUCTURAL CHARACTERISTICS WITHOUT PRIOR NOTICE. ALL RIGHTS ARE RESERVED AND THE DUPLICATION, EVEN PARTIAL, OF THESE DOCUMENTS, AS WELL AS ITS DISTRIBUTION TO THIRD PARTIES ARE FORBIDDEN, UNLESS OTHERWISE AND EXPRESSLY AUTHORIZED BY SPECIALINSERT®.