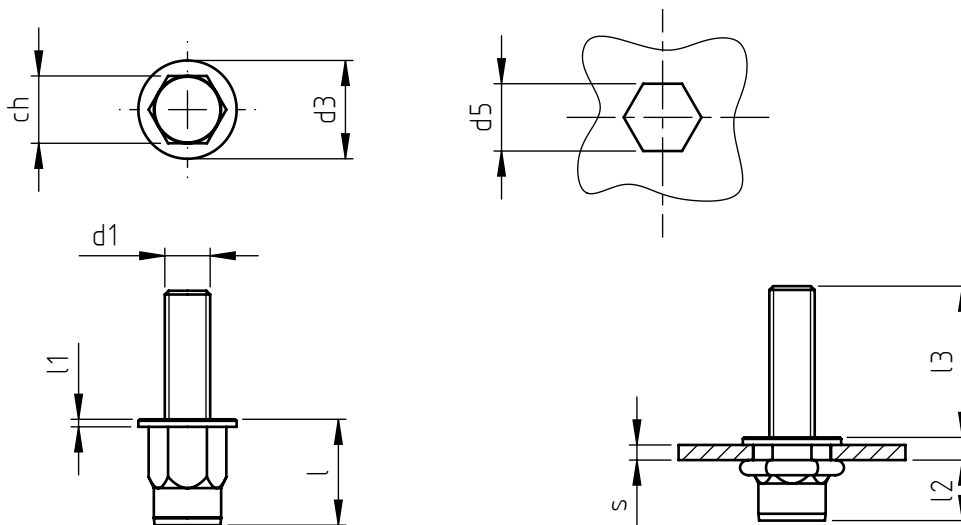


Application: metal and not metal sheets.
Assembly: with special tools.



code	s grip	l	d1 6g	l3 ≧	ch	d3	l1	d5 +0,15 0	l2 *
ESTCP M5X15	0,5-3	12,0	M5	15	6,9	10	1	7	8,1
ESTCP M5X25				25					
ESTCP M6X15	0,5-3	14,5	M6	15	8,9	13	1,5	9	9,1
ESTCP M6X25				25					
ESTCP M8X20	0,5-3	15,5	M8	20	10,9	16	1,5	11	9,6
ESTCP M8X25				25					

Non binding dimensions, expressed in mm.

* Dimensions determined from the average of the grip "s" min and max values.

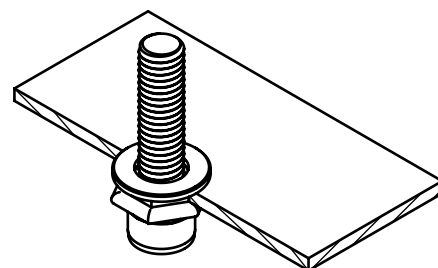
Standard
 On demand
 Not manufactured

Material: screw: steel 8.8 class
rivet: cold formed steel

Finishing: white zinc-plated

Thread: ISO 6 g metric

Example: M6 threaded stud rivet,
long 25 mm (l3) after deformation,
applied on a sheet with 2,00 mm
thickness:



ESTCP M6X25