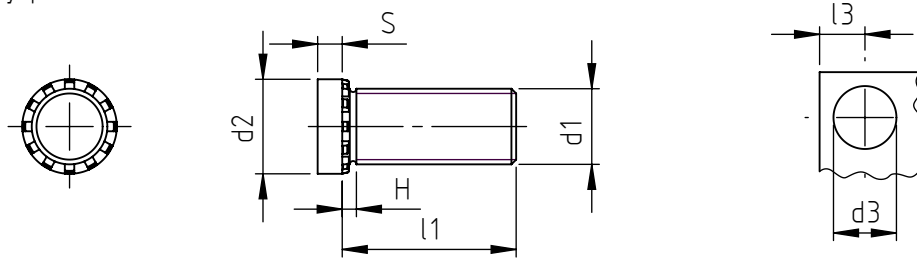


Application: metal sheets, stainless steel, light alloy, non-ferrous metal sheets.
 Assembly: by pressure.



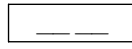
code	stud length l1 ±0,4	available			
		M5	M6	M8	M10
CPTR15_____	15				
CPTR20_____	20				
CPTR25_____	25				
CPTR30_____	30				
CPTR35_____	35				
CPTR40_____	40				
CPTR45_____	45				
CPTR50_____	50				

code	metric thread d1	sheet thickness ≥	head diameter d2 ± 0,25	anchorage height H max	thickness head S max	hole diameter d3 +0,08/0	distance from the edge l3 min
CPTR_0 050__	M5	1,3	7,8	2,7	1,14	5,0	10,7
CPTR_0 060__	M6	1,5	9,4	2,8	1,27	6,0	11,5
CPTR_0 080__	M8	2,0	12,5	3,5	1,78	8,0	12,7
CPTR_0 100__	M10	2,3	15,7	4,1	2,29	10,0	13,7

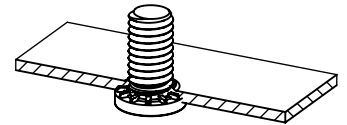
Other lengths on demands. Non binding dimensions, expressed in mm.



Standard



On demand

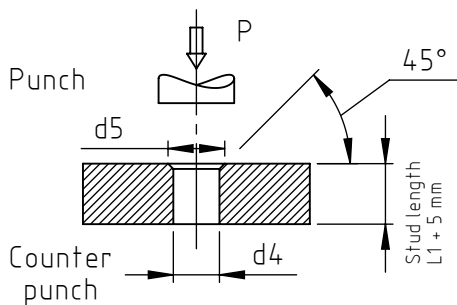


Material: steel, stainless steel
 Finishing: steel studs: zinc-plated (on 80 HRB max)
 stainless steel studs: natural finishing (on 70 HRB max)

_____12
 _____50

Thread d1: metric ISO 6 g

Example of designation: self clinching stud, M 5 thread, with reinforced head, stud length L=15 mm, zinc plated steel: CPTR15 0 050.12



stud	counter punch hole diameter d4	flare diameter d5	approx pressure required on sheets KN
M5	5,1	6,4	21 ÷ 42
M6	6,1	7,6	21 ÷ 50
M8	8,1	10,2	21 ÷ 60
M10	10,1	12,2	32 ÷ 84

Note: the pressure value depends from the materials hardness. The optimal value of the pressure is obtained empirically. The CPTR stud must be inserted flat to the sheet metal surface. Avoid any over-pressure. It is advisable to carry out some preliminary tests in order to determine the best assembly.

Headquarter and Export department:
 Via Monfalcone 144 - 10136 - Turin - IT - Tel. +39.011.700301 - Fax +39.011.702947
 Milan branch:
 Via E. Cialdini 37 - 20161 - Milan - IT - Tel. +39.02.646.8476 - Fax +39.02.662.00275
 Production and purchase departments:
 Via E. Pavanello 1 - 30030 - Maerne di Martellago (Venice) - IT - Tel. +39.041.503.0100
 Fax +39.041.503.0110

SPECIALINSERT COMMITS ITSELF TO CONTINUOUSLY IMPROVE ITS PRODUCTS. IT RESERVES THE RIGHT TO CHANGE THEIR TECHNICAL AND STRUCTURAL CHARACTERISTICS WITHOUT PRIOR NOTICE. ALL RIGHTS ARE RESERVED AND THE DUPLICATE, EVEN PARTIAL OF THESE DOCUMENTS, AS WELL AS ITS DISTRIBUTION TO THIRD PARTIES ARE FORBIDDEN, UNLESS OTHERWISE AND EXPRESSLY AUTHORIZED BY SPECIALINSERT.