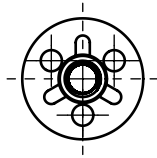
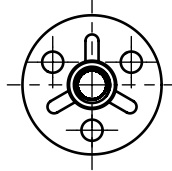


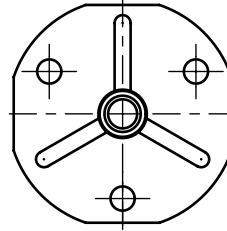
Application: fiberglass, composite materials and others.
Assembly: bonding.



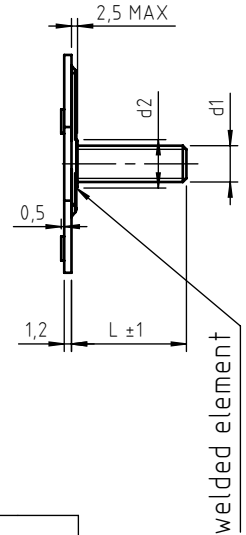
Y2000= \varnothing 20



Y2300= \varnothing 23



Y3800= \varnothing 38



| code | **thread d1 | d2 steel.12 | d2 AISI.56 | * L = stud length | | | | | | | | | | |
|--------------|----------------|----------------|---------------|-------------------|----|----|----|----|----|----|----|----|----|----|
| | | | | 06 | 08 | 10 | 12 | 15 | 16 | 20 | 25 | 30 | 35 | 40 |
| PR_Y2000040_ | M4 | 5,5 | 8,5 | | | | | | | | | | | |
| PR_Y2300040_ | | | | | | | | | | | | | | |
| PR_Y3800040_ | | | | | | | | | | | | | | |
| PR_Y2000050_ | M5 | 6,5 | 9,8 | -- | | | | | | | | | | |
| PR_Y2300050_ | | | | -- | | | | | | | | | | |
| PR_Y3800050_ | | | | -- | | | | | | | | | | |
| PR_Y2000060_ | M6 | 7,5 | 9,8 | -- | -- | | | | | | | | | |
| PR_Y2300060_ | | | | -- | -- | | | | | | | | | |
| PR_Y3800060_ | | | | -- | -- | | | | | | | | | |
| PR_Y2000080_ | M8 | 10 | 11,5 | -- | -- | | | | | | | | | |
| PR_Y2300080_ | | | | -- | -- | | | | | | | | | |
| PR_Y3800080_ | | | | -- | -- | | | | | | | | | |

Non binding dimensions, expressed in mm.

- * For studs length over 40 mm consult the PRSY sheet.
- ** For M10 thread see PRSY data sheet (minimum catalog length 45mm).

Standard
 On demand
 Not manufactured

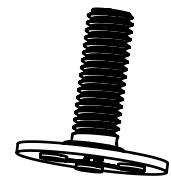
Material: steel _____,12, stainless steel AISI 316 L _____,51

Finishing: steel stud: zinc coated
stainless steel stud: electropolished

Tolerance: where not specified, coarse degree of accuracy,
according to ISO 2768-m

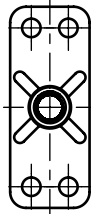
Thread: metric ISO 6 g

Example
of designation: threaded stud with Y2000 round plate, M6 thread,
20 mm length, zinc plated steel: PR20Y2000060.12

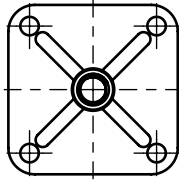


Headquarter and Export department:
Via Montfalcone 144 - 10136 - Turin - IT - Tel. +39.011.700301 - Fax +39.011.702947
Milan branch:
Via E. Cialdini 37 - 20161 - Milan - IT - Tel. +39.02.646.8476 - Fax +39.02.662.00275
Production and purchase departments:
Via E. Pavanello 1 - 30030 - Maerne di Martellago (Venice) - IT - Tel. +39.041.503.0100
Fax +39.041.503.0110

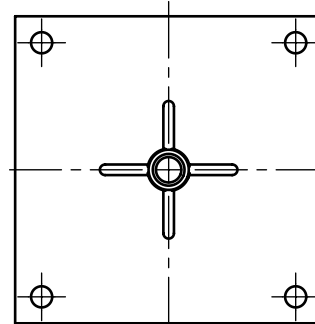
Application: fiberglass, composite materials and others.
Assembly: bonding.



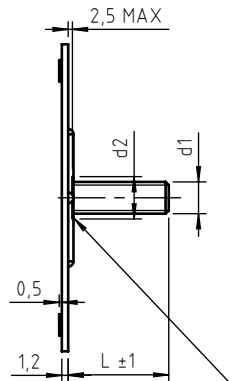
Y3815=38x15



Y3232=32x32



Y5858=58x58



welded element

| code | **thread d1 | d2 stell.12 | d2 AISI.56 | * L = stud length | | | | | | | | | | |
|--------------|----------------|----------------|---------------|-------------------|----|----|----|----|----|----|----|----|----|----|
| | | | | 06 | 08 | 10 | 12 | 15 | 16 | 20 | 25 | 30 | 35 | 40 |
| PR_Y3815040. | M4 | 5,5 | 8,5 | | | | | | | | | | | |
| PR_Y3232040. | | | | | | | | | | | | | | |
| PR_Y5858040. | | | | | | | | | | | | | | |
| PR_Y3815050. | M5 | 6,5 | 9,8 | -- | | | | | | | | | | |
| PR_Y3232050. | | | | -- | | | | | | | | | | |
| PR_Y5858050. | | | | -- | | | | | | | | | | |
| PR_Y3815060. | M6 | 7,5 | 9,8 | -- | -- | | | | | | | | | |
| PR_Y3232060. | | | | -- | -- | | | | | | | | | |
| PR_Y5858060. | | | | -- | -- | | | | | | | | | |
| PR_Y3815080. | M8 | 10 | 11,5 | -- | -- | | | | | | | | | |
| PR_Y3232080. | | | | -- | -- | | | | | | | | | |
| PR_Y5858080. | | | | -- | -- | | | | | | | | | |

Non binding dimensions, expressed in mm.

* For studs length over 40 mm consult the PRSY sheet.

** For M10 thread see PRSY data sheet (minimum catalog length 45mm).

Standard On demand Not manufactured

Material: steel _____12, stainless steel AISI 316 L _____51

Finishing: steel stud: zinc coated
stainless steel stud: electropolished

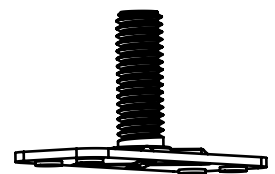
Tolerance: where not specified, coarse degree of accuracy,
according to ISO 2768-m

Thread: metric ISO 6 g

Example

of designation: threaded stud with Y3815 rectangular plate, M6
thread, 20 mm length, zinc plated steel:

PR20Y3815060.12



Headquarter and Export department:
Via Montfalcone 144 - 10136 - Turin - IT - Tel. +39.011.700301 - Fax +39.011.702947
Milan branch:
Via E. Cialdini 37 - 20161 - Milan - IT - Tel. +39.02.646.8476 - Fax +39.02.662.00275
Production and purchase departments:
Via E. Pavanello 1 - 30030 - Maerne di Martellago (Venice) - IT - Tel. +39.041.503.0100
Fax +39.041.503.0110