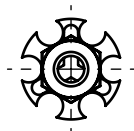
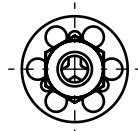


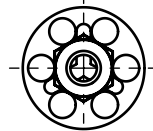
Application: fiberglass, composite materials and other.  
Assembly: bonding, lamination, moulding.



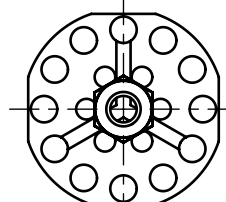
T1900=Ø19



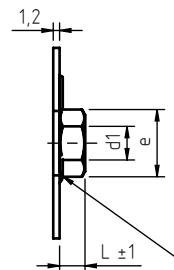
T2000=Ø20



T2300=Ø23



T3800=Ø38



welded element

code	thread d1	hex key	e	L
DRC03T1900040. _	M 4	7	7,8	3,2
DRC03T2000040. _				
DRC03T2300040. _				
DRC03T3800040. _				
DRC04T1900050. _	M 5	8	8,9	4
DRC04T2000050. _				
DRC04T2300050. _				
DRC04T3800050. _				
DRC05T1900060. _	M 6	10	11,1	5
DRC05T2000060. _				
DRC05T2300060. _				
DRC05T3800060. _				
DRC06T1900080. _	M 8	13	14,4	6,5
DRC06T2000080. _				
DRC06T2300080. _				
DRC06T3800080. _				
DRC08T2000100. _	M10	17	19,0	8
DRC08T2300100. _				
DRC08T3800100. _				

For M4, M5 and M6  
threads  
see standard  
articles on  
"DFC" sheet

Non binding dimensions, expressed in mm.

Standard    
  On demand    
  Not manufactured

Material: steel \_\_\_\_\_,12, stainless steel AISI 316 \_\_\_\_\_,51

Finishing: steel nuts: zinc plated  
stainless steel nuts AISI 316: natural

Tolerance: where not specified, coarse degree of accuracy,  
according to ISO 2768-m

Thread: metric ISO 6 H

Example of  
designation: threaded nut with T2300 round blind plate, M5 thread,  
4 mm height, zinc plated steel:

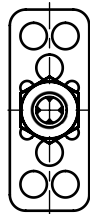
DRC04T2300050.12



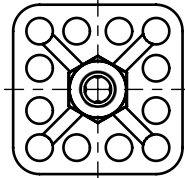
Headquarter and Export department:  
Via Montfalcone 144 - 10136 - Turin - IT - Tel. +39.011.700301 - Fax +39.011.702947  
Milan branch:  
Via E. Cialdini 37 - 20161 - Milan - IT - Tel. +39.02.646.8476 - Fax +39.02.662.00275  
Production and purchase departments:  
Via E. Pavanello 1 - 30030 - Maerne di Martellago (Venice) - IT - Tel. +39.041.503.0100  
Fax +39.041.503.0110

SPECIALINSERT® COMMITS ITSELF TO CONTINUOUSLY IMPROVE ITS PRODUCTS. IT RESERVES THE RIGHT TO CHANGE THEIR TECHNICAL AND STRUCTURAL CHARACTERISTICS WITHOUT PRIOR NOTICE. ALL RIGHTS ARE RESERVED AND THE DUPLICATION, EVEN PARTIAL, OF THESE DOCUMENTS, AS WELL AS ITS DISTRIBUTION TO THIRD PARTIES, ARE FORBIDDEN, UNLESS OTHERWISE AND EXPRESSLY AUTHORIZED BY SPECIALINSERT.

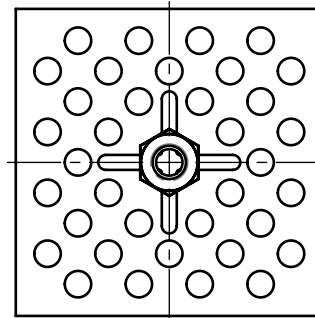
Application: fiberglass, composite materials and other.  
Assembly: bonding, lamination, moulding.



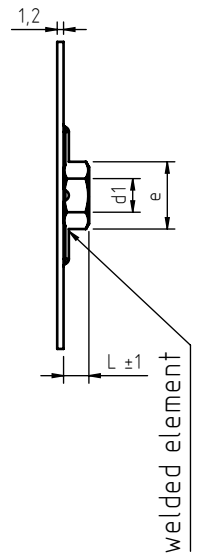
R3815=38x15



Q3232=32x32



Q5858=58x58



code	thread d1	hex key	e	L
DRC03R3815040. _	M 4	7	7,8	3,2
DRC03Q3232040. _				
DRC03Q5858040. _				
DRC04R3815050. _	M 5	8	8,9	4
DRC04Q3232050. _				
DRC04Q5858050. _				
DRC05R3815060. _	M 6	10	11,1	5
DRC05Q3232060. _				
DRC05Q5858060. _				
DRC06R3815080. _	M 8	13	14,4	6,5
DRC06Q3232080. _				
DRC06Q5858080. _				
DRC08R3815100. _	M10	17	19,0	8
DRC08Q3232100. _				
DRC08Q5858100. _				

For M4, M5 and M6  
threads  
see standard  
articles on  
"DFC" sheet

Non binding dimensions, expressed in mm.



Standard



On demand



Not manufactured

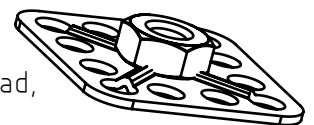
Material: steel \_\_\_\_\_,12, stainless steel AISI 316 \_\_\_\_\_,51

Finishing: steel nuts: zinc plated  
stainless steel nuts AISI 316: natural

Tolerance: where not specified, coarse degree of accuracy,  
according to ISO 2768-m

Thread: metric ISO 6 H

Example of  
designation: threaded nut with Q3232 square blind plate, M5 thread,  
4 mm height, zinc plated steel:



DRC04Q3232050.12

SPECIALINSERT® COMMITS ITSELF TO CONTINUOUSLY IMPROVE ITS PRODUCTS. IT RESERVES THE RIGHT TO CHANGE THEIR TECHNICAL AND STRUCTURAL CHARACTERISTICS WITHOUT PRIOR NOTICE. ALL RIGHTS ARE RESERVED AND THE DUPLICATE, EVEN PARTIAL, OF THESE DOCUMENTS, AS WELL AS ITS DISTRIBUTION TO THIRD PARTIES, ARE FORBIDDEN, UNLESS OTHERWISE AND EXPRESSLY AUTHORIZED BY SPECIALINSERT.