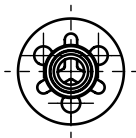
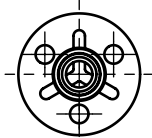


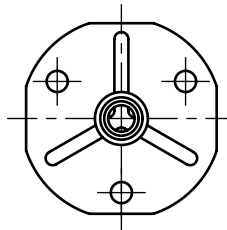
Application: fiberglass, composite materials and other.
Assembly: bonding, rolling, moulding.



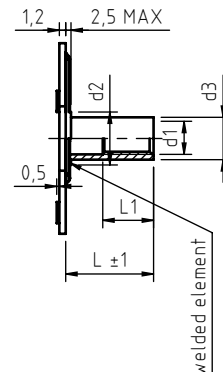
Y2000=φ20



Y2300=φ23



Y3800=φ38



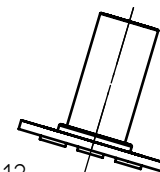
code	thread d1	d2	d3	L= bush lenght										L1			
				5	6	10	12	14	15	16	20	22	25		30		
BRC_Y2000040_	M 4	12	8,3														up to 3 times the d1
BRC_Y2300040_																	
BRC_Y3800040_																	
BRC_Y2000050_	M 5	13	9,6														
BRC_Y2300050_																	
BRC_Y3800050_																	
BRC_Y2000060_	M 6	13	9,6														
BRC_Y2300060_																	
BRC_Y3800060_																	
BRC_Y2000080_	M 8	15	11														
BRC_Y2300080_																	
BRC_Y3800080_																	
BRC_Y2000100_	M 10	16	12,6														
BRC_Y2300100_																	
BRC_Y3800100_																	

Non binding dimensions, expressed in mm.

Standard
 On demand
 Not manufactured

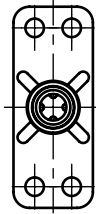
Material: steel _____,12, stainless steel AISI 316 _____,51
 Finishing: steel bush: zinc coated
 stainless steel bush AISI 316: natural
 Tolerance: where not specified, coarse degree of accuracy,
 according to ISO 2768-m
 Thread: metric ISO 6 H
 Example of designation: threaded bush with Y2000 round blind plate, M5
 thread, 12 mm lenght, zinc plated steel:

BRC12Y2000050.12

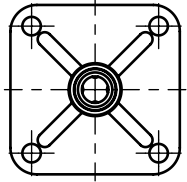


SPECIALINSERT® COMMITS ITSELF TO CONTINUOUSLY IMPROVE ITS PRODUCTS. IT RESERVES THE RIGHT TO CHANGE THEIR TECHNICAL AND STRUCTURAL CHARACTERISTICS WITHOUT PRIOR NOTICE. ALL RIGHTS ARE RESERVED AND THE DUPLICATE, EVEN PARTIAL OF THESE DOCUMENTS, AS WELL AS ITS DISTRIBUTION TO THIRD PARTIES ARE FORBIDDEN, UNLESS OTHERWISE AND EXPRESSLY AUTHORIZED BY SPECIALINSERT.

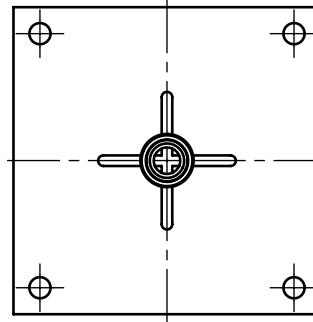
Application: fiberglass, composite materials and other.
Assembly: bonding, rolling, moulding.



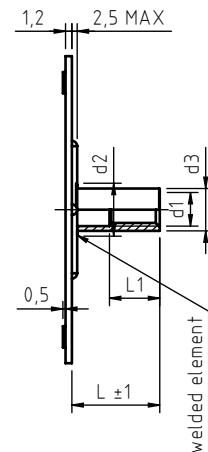
Y3815=38x15



Y3232=32x32



Y5858=58x58

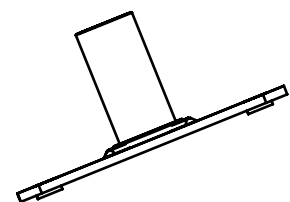


code	thread d1	d2	d3	L= bush length											L1				
				5	6	10	12	14	15	16	20	22	25	30					
BRC_Y3815040. __	M 4	12	8,3															up to 3 times the d1	
BRC_Y3232040. __																			
BRC_Y5858040. __																			
BRC_Y3815050. __	M 5	13	9,6																
BRC_Y3232050. __																			
BRC_Y5858050. __																			
BRC_Y3815060. __	M 6	13	9,6																
BRC_Y3232060. __																			
BRC_Y5858060. __																			
BRC_Y3815080. __	M 8	15	11																
BRC_Y3232080. __																			
BRC_Y5858080. __																			
BRC_Y3815100. __	M 10	16	12,6																
BRC_Y3232100. __																			
BRC_Y5858100. __																			

Non binding dimensions, expressed in mm.

Standard
 On demand
 Not manufactured

Material: steel _____,12, stainless steel AISI 316 _____,51
 Finishing: steel bush: zinc coated
 stainless steel bush AISI 316: natural
 Tolerance: where not specified, coarse degree of accuracy,
 according to ISO 2768-m
 Thread: metric ISO 6 H
 Example of designation: threaded bush with Y3815 rectangular blind plate, M5
 thread, 12 mm length, zinc plated steel:



BRC12Y3815050.12

SPECIALINSERT®. COMMITS ITSELF TO CONTINUOUSLY IMPROVE ITS PRODUCTS. IT RESERVES THE RIGHT TO CHANGE THEIR TECHNICAL AND STRUCTURAL CHARACTERISTICS WITHOUT PRIOR NOTICE. ALL RIGHTS ARE RESERVED AND THE DUPLICATE, EVEN PARTIAL, OF THESE DOCUMENTS, AS WELL AS ITS DISTRIBUTION TO THIRD PARTIES, ARE FORBIDDEN, UNLESS OTHERWISE AND EXPRESSLY AUTHORIZED BY SPECIALINSERT.