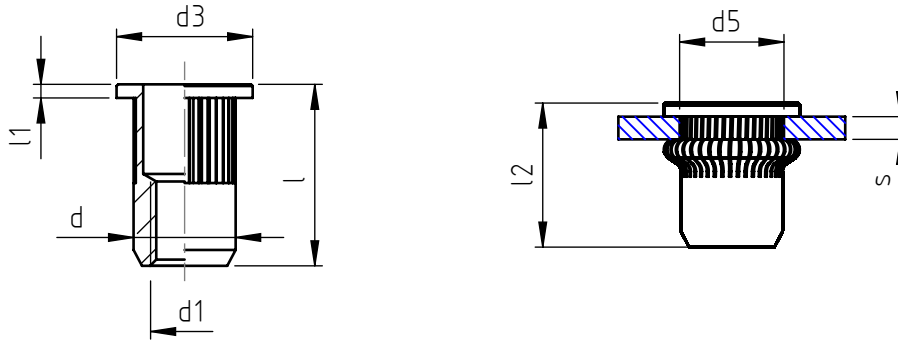


Application: on boxed and tubular sections, on sheet-metal and non-metal sheets.

Assembly: by specific manual, pneumatic, oleopneumatic or electric tools.



code	s grip	l	d1 6H	d	d3	l1	d5 +0,15 0	l2 *
TC M 5/TZ	0,5 ÷ 2,5	12,5	M 5	7	10	1,0	7	7,0
TC M 6/TZ	0,5 ÷ 3,0	16,0	M 6	9	12	1,2	9	9,5

Non binding dimensions, expressed in mm.

* Dimension measured on average thickness. Variable according to "s" dimension.



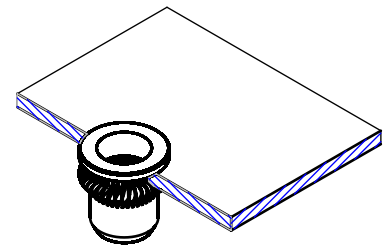
Material: TITANIUM

Finishing: natural (other finishes on demand)

Tolerance: according to UNI standards EN 22768-1

Thread: ISO 6 H metric

Example: threaded tubular rivet nut, with round head, knurled, grip 2,0 mm, M6 thread, in titanium: TC M 6/TZ



SPECIALINSERT® COMMITS ITSELF TO CONTINUOUSLY IMPROVE ITS PRODUCTS. IT RESERVES THE RIGHT TO CHANGE THEIR TECHNICAL AND STRUCTURAL CHARACTERISTICS WITHOUT PRIOR NOTICE. ALL RIGHTS ARE RESERVED AND THE DUPLICATION, EVEN PARTIAL, OF THESE DOCUMENTS, AS WELL AS ITS DISTRIBUTION TO THIRD PARTIES, ARE FORBIDDEN, UNLESS OTHERWISE AND EXPRESSLY AUTHORIZED BY SPECIALINSERT.