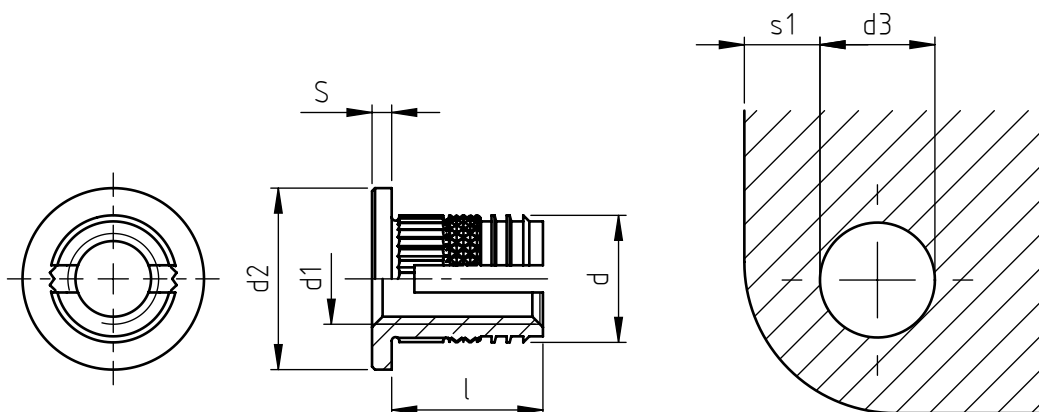


Applications: thermoplastic materials.
 Assembly: by pressure through expansion anchorage.



| code | metric thread d1 | anchorage dimension l | external diameter d | head thickness s | head diameter d2 | hole diameter d3* | minimum thickness s1 |
|---------------|---------------------|--------------------------|------------------------|---------------------|---------------------|----------------------|-------------------------|
| IPR2 0 040.81 | M 4 | 7,5 | 6,4 | 0,8 | 10 | 5,9 | 6 |
| IPR2 0 050.81 | M 5 | 9 | 7,4 | 1 | 11 | 7,0 | 6 |
| IPR2 0 060.81 | M 6 | 10 | 8,4 | 1,3 | 12 | 7,6 | 6 |

Non binding dimension, expressed in mm.

* Hole diameter might change depending on the receiving materials.

For a correct usage of the product it is recommended to carry out some preliminary assembling tests to determine the correct hole diameter.

Use screw with proper length in order to exploit the total length of thread of the bushing.

Material: brass with lower lead content than 0,2%.

Tolerances: ISO 2768-m.

Threading: metric ISO 6 H.

