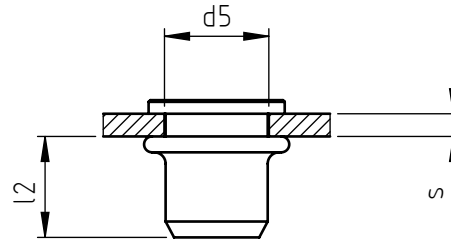
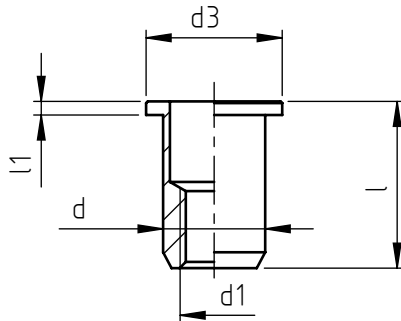


Application: metal and not metal sheets.
Assembly: with special hand or pneumatic tools.



| code | steel | steel | stainless steel | s grip | l | d1 6H | d | d3 | l1 | d5 +0,15 / 0 | l2 * |
|-------------|-------|-------|-----------------|-----------|------|-------|----|----|-----|--------------|------|
| TC/C M 5/ _ | 8 | 8S | X | 0,5 ÷ 2,0 | 9,5 | M 5 | 7 | 10 | 1 | 7 | 5,5 |
| TC/C M 6/ _ | 8 | 8S | X | 0,5 ÷ 2,5 | 14,7 | M 6 | 9 | 12 | 1,2 | 9 | 7,5 |
| TC/C M 8/ _ | 8 | 8S | X | 0,5 ÷ 2,0 | 14,8 | M 8 | 11 | 14 | 1,3 | 11 | 8 |

Non binding dimensions, expressed in mm.

* Dimension determined from the average of the grip "s" min and max values.

Standard
 On demand
 Not manufactured

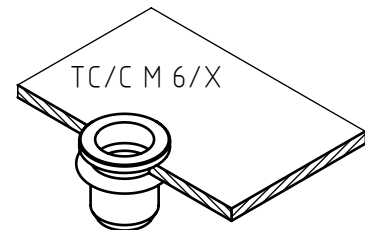
Material: steel nr.1.0718 _____ / ____ / 8
 steel nr.1.0303 _____ / ____ / 8S
 stainless steel nr.1.4305 _____ / ____ / X

Finishing: steel: white zinc-plated
 stainless steel: natural

Tolerances: according to UNI standards EN 22768-1

Thread: ISO 6 H metric

Example: blind threaded nut, cylindrical head,
 short round shank, stainless steel,
 grip 2,0 mm, M 6 thread:
 TC/C M 6/X



SPECIALINSERT - COMMITS ITSELF TO CONTINUOUSLY IMPROVE ITS PRODUCTS - IT RESERVES THE RIGHT TO CHANGE THEIR TECHNICAL AND STRUCTURAL CHARACTERISTICS WITHOUT PRIOR NOTICE - ALL RIGHTS ARE RESERVED AND THE DUPLICATE, EVEN PARTIAL OF THESE DOCUMENTS, AS WELL AS ITS DISTRIBUTION TO THIRD PARTIES ARE FORBIDDEN, UNLESS OTHERWISE AND EXPRESSLY AUTHORIZED BY SPECIALINSERT.