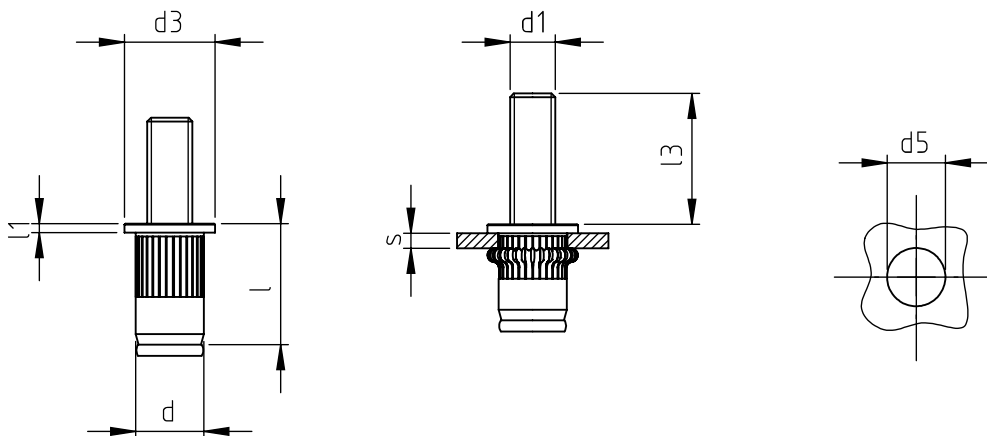


Application: metal and not metal sheets.
Assembly: with special hand or pneumatic tools.



code	s grip	l ±0,5	d1	l3	d max	d3 ±0,5	l1 ±0,2	d5 +0,15 -0
TCP-M M5X15/X	0,5 ÷ 3,0	13	M 5	15	7	10	1	7
TCP-M M5X20/X				20				
TCP-M M5X25/X				25				
TCP-M M6X15/X	1,0 ÷ 3,0	16	M6	15	9	11,8	1,5	9
TCP-M M6X20/X				20				
TCP-M M6X25/X				25				

Non binding dimensions, expressed in mm.

 Standard

 On demand

 Not manufactured

Material: stainless steel
Finishing: natural
Thread: ISO 6g metric
Example: M 6 threaded stud rivet, cylindrical shank
knurled, 15 mm long after deformation,
applied on a sheet with 2,0 mm thitkness:
TCP-M M6X15/X

