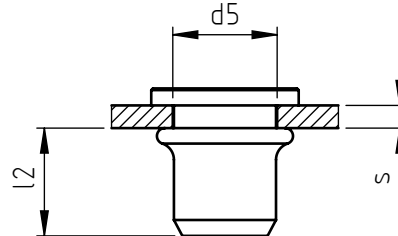
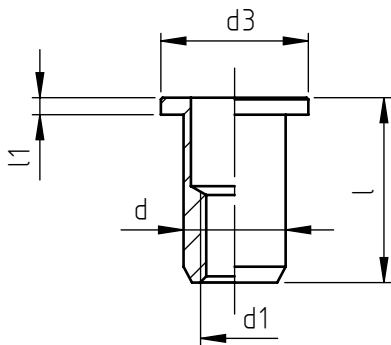


Application: metal and not metal sheets.
Assembly: with special hand or pneumatic tools.



code	steel	stainless steel	s grip	l	d1 6H	d	d3	l1	d5 +0,15 0	l2 *
TC/TL M 3/___	8S	X	0,5 ÷ 2,0	9,5	M 3	5	9	0,8	5	6
TC/TL/L M 3/___	8S	X	2,0 ÷ 3,5	11						
TC/TL M 4/___	8S	X	0,5 ÷ 2,0	10,5	M 4	6	10	0,8	6	6,5
TC/TL/L M 4/___	8S	X	2,0 ÷ 4,0	12,5						
TC/TL M 5/___	8S	X	0,5 ÷ 2,5	12,5	M 5	7	11	1	7	7
TC/TL/L M 5/___	8S	X	2,5 ÷ 4,5	14,5						
TC/TL M 6/___	8S	X	0,5 ÷ 3,0	16,3	M 6	9	13	1,5	9	9,5
TC/TL/L M 6/___	8S	X	3,0 ÷ 5,5	18,8						
TC/TL M 8/___	8S	X	0,5 ÷ 3,5	18	M 8	11	16	1,5	11	9,5
TC/TL/L M 8/___	8S	X	3,5 ÷ 6,0	20,5						
TC/TL M10/___	8S	X	0,5 ÷ 3,5	22	M10	13	18	1,8	13	12,5
TC/TL/L M10/___	8S	X	3,5 ÷ 6,0	24,5						
TC/TL M12/___	8S	X	0,5 ÷ 3,5	27	M12	16	23	2	16	16
TC/TL/L M12/___	8S	X	3,5 ÷ 6,5	30						

Non binding dimensions, expressed in mm.

* Dimension determined from the average of the grip "s" min and max values.

Standard

On demand

Not manufactured

Material: steel nr.1.0303
stainless steel nr.1.4305

___/___/8S
___/___/X

Finishing: steel: white zinc-plated
stainless steel: natural

Tolerances: according to UNI standards EN 22768-1

Thread: ISO 6 H metric

Example: blind threaded nut, cylindrical large flange head, round shank, stainless steel, grip 2,0 mm, M 6 thread:

TC/TL M 6/X

