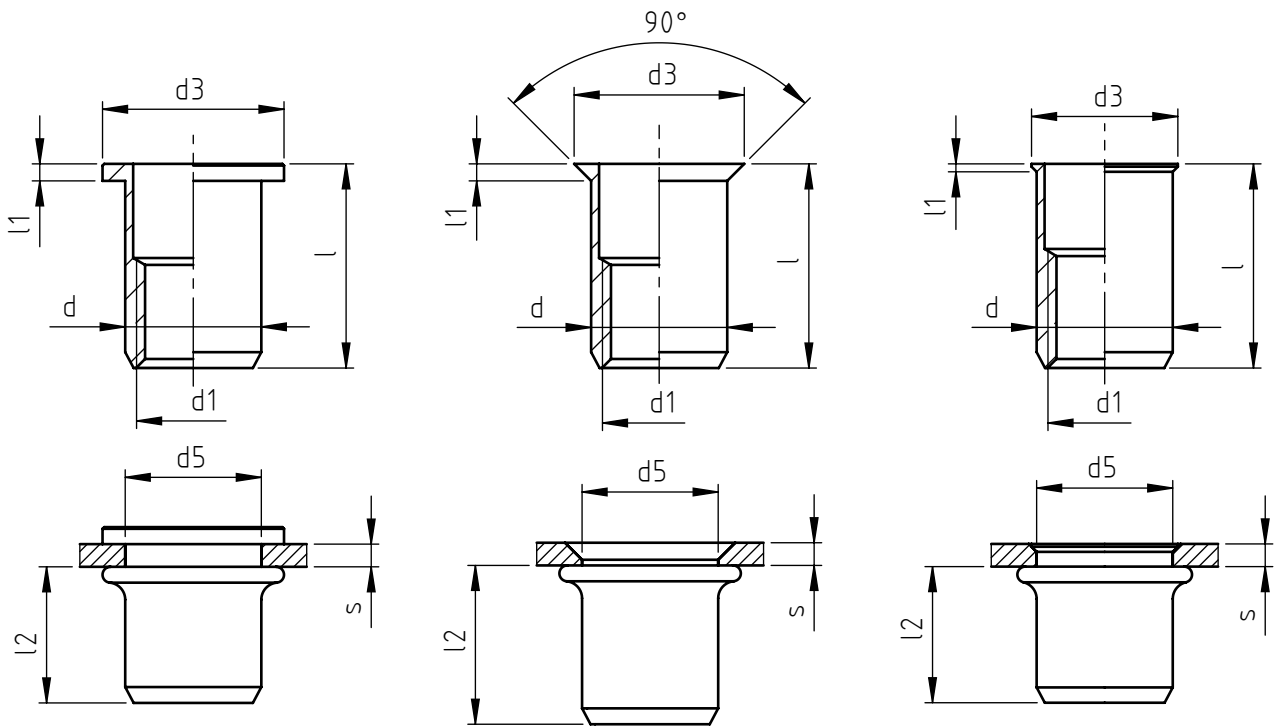


Application: metal and not metal sheets.
Assembly: with special hand or pneumatic tools.



code steel	code stainless steel	s grip	l	d1 6H	d	d3	l1	d5 +0,15 0	l2 *
TC M10	TC M10/X	0,5 ÷ 3,5	18	M10	12	16	1,5	12	12,5
TC/L M10	TC/L M10/X	3,5 ÷ 6,0	20,5						
TCS M10	TCS M10/X	1,6 ÷ 3,5	18	M10	12	15	1,5	12	14
TCS/L M10	TCS/L M10/X	3,5 ÷ 6,0	20						
TFM M10	TFM M10/X	0,5 ÷ 3,5	18	M10	12	12,9	~0,7	12	12,5
TFM/L M10	TFM/L M10/X	3,5 ÷ 6,0	20,5						

Non binding dimensions, expressed in mm.

* Dimension determined from the average of the grip "s" min and max values.

Standard
 On demand
 Not manufactured

Material: steel nr.1.0718
stainless steel nr.1.4305

Finishing: steel: white zinc-plated
stainless steel: natural

Tolerances: according to UNI standards EN 22768-1

Threading: ISO 6 H metric

Example: blind threaded nut, low profile head,
round shank, steel, grip 2,0 mm,
M 10 thread: TFM M10

