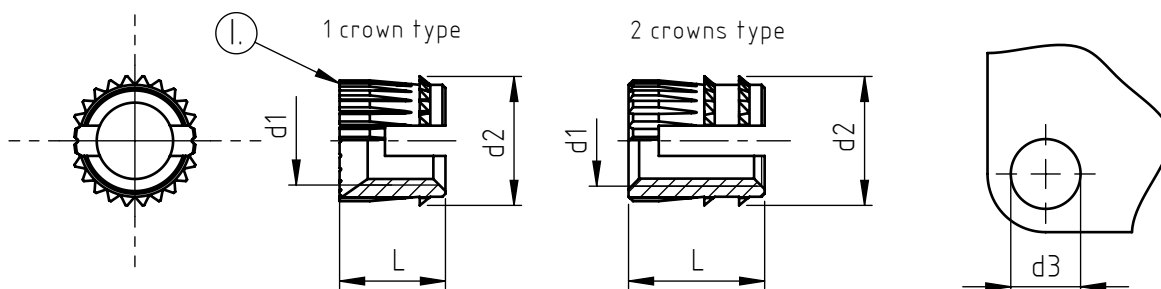


Applications: thermoplastic materials.  
Assembly: by pressure with expansion.



code	metric thread	crown diameter	total length	number of crowns	hole diameter *
	d1	d2	L	n°	d3
M. 2 C.03,5 (I)	M 2	4	3,5	1	3,2
M. 2,5 C.04 (I)	M 2,5	4,5	4	1	3,5
M. 3 C.04	M 3	5,6	4	1	4,7
M. 3 C.05			5	1	
M. 3 E.08			8	2	
M. 3 D.09,5	M 3,5	6	9,5	2	5,1
M. 3,5 C.05			5	1	
M. 3,5 E.08			8	2	
M. 3,5 D.09,5	M 4	6,6	9,5	2	5,6
M. 4 C.05			5	1	
M. 4 E.08			8	2	
M. 4 D.09,5	M 5	7,6	9,5	2	6,8
M. 5 C.06			6	1	
M. 5 D.09			9	2	
M. 6 C.07	M 6	8,6	7	1	7,7
M. 6 D.09			9	2	
M. 8 D.10	M 8	10,6	10	2	9,6

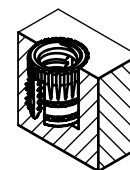
Non binding dimensions, expressed in mm.

(I) The upper bevel angle is not usually provided for M2 M2,5.

\* In order to use correctly the products, we suggest to carry out some preliminary assembly tests to determine the right hole diameter. Use screws of suitable length in order to make use of the whole thread of the bush.

Standard
  On demand
  Not manufactured

Material: brass  
 Finishing: natural  
 Tolerances: ISO 2768 - m  
 Threading d1: ISO 6 H  
 Example: threaded expansion bushing, M5 thread,  
 9 mm length, brass: M. 5 D.09



Headquarter and Export department:  
 Via Montfalcone 144 - 10136 - Torino - IT - Tel. +39.011.700301 - Fax +39.011.702947  
 Milan branch:  
 Via E. Cialdini 37 - 20126 - Milano - IT - Tel. +39.02.646.8476 - Fax +39.02.662.00275  
 Production and purchase departments:  
 Via E. Pavanello 1 - 30030 - Maerme di Martellago (Venezia) - IT - Tel. +39.041.503.0100  
 Fax +39.041.503.0110