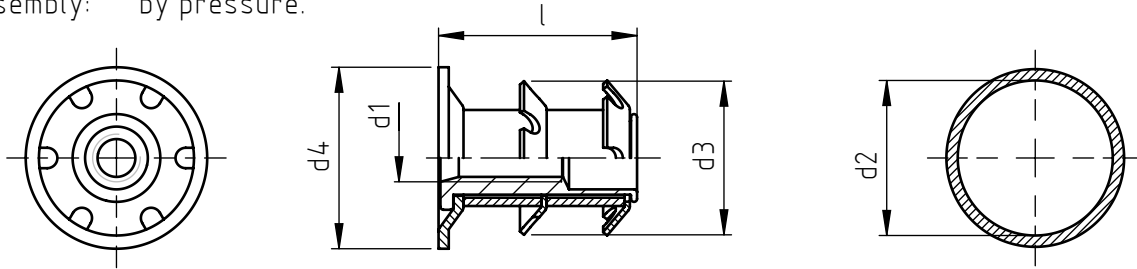


Application: at the end of square metallic and non-metallic tubes.
 Assembly: by pressure.

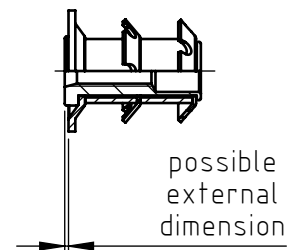


code	d1	d2 *	d3	l	d4
ITT2T/M 8/14,8	M 8	14,8 ÷ 16,1	17,0	26	19
ITT2T/M 8/16,4		16,4 ÷ 17,7	18,7		19
ITT2T/M 8/17,9		17,9 ÷ 19,3	19,7		22
ITT2T/M 8/18,9		18,9 ÷ 20,2	21,0		22
ITT2T/M 8/19,5		19,5 ÷ 20,9	21,6		22
ITT2T/M 8/21,4		21,4 ÷ 22,4	23,5		25
ITT2T/M 8/22,1		22,1 ÷ 23,4	24,6		25
ITT2T/M 8/22,7		22,7 ÷ 24,0	25,4		25
ITT2T/M 8/24,6		24,6 ÷ 25,6	26,5		28
ITT2T/M 8/25,3		25,3 ÷ 26,6	27,6		29
ITT2T/M 8/26		26,0 ÷ 28,0	28,9		30
ITT2T/M 8/28,4		28,4 ÷ 29,8	30,8		32
ITT2T/M 8/31,7		31,7 ÷ 32,9	33,7		35
ITT2T/M 8/34,8		34,8 ÷ 36,1	37,1		38
ITT2T/M 8/36		36,0 ÷ 38,0	39		40
ITT2T/M 8/56		56,0 ÷ 58,0	59,9		60
ITT2T/M10/17,9	M10	17,9 ÷ 19,3	19,7	26	22
ITT2T/M10/18,9		18,9 ÷ 20,2	21,6		22
ITT2T/M10/21,4		21,4 ÷ 22,4	23,5		25
ITT2T/M10/22,7		22,7 ÷ 24,0	25,4		25
ITT2T/M10/24,6		24,6 ÷ 25,6	26,5		28
ITT2T/M10/26		26,6 ÷ 27,6	28,2		28,5
ITT2T/M10/28,4		28,4 ÷ 29,8	30,8		32
ITT2T/M10/31,7		31,7 ÷ 32,9	33,7		35
ITT2T/M10/32,7		32,7 ÷ 33,9	35		38
ITT2T/M10/34,8		34,8 ÷ 36,1	37,1		38
ITT2T/M10/36	36,0 ÷ 38,0	39,0	40		

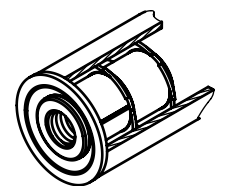
Dimensions and images are not binding, expressed in mm.

Standard
 On demand
 Not manufactured

Material: steel
 Example: 2 crowns flange insert for round tubes,
 M 8 threaded, internal diameter 20,5 mm: ITT2T/M 8/19,5



* It is advisable to carry out some preliminary assembling tests in order to determine the best product. For proper use it is suggested to use a locknut for the pin. The upper side of the threaded bush might come out from the flange due to technical needs, changing the L length. Flanged head types are developed to be used with wheels or adjustable feet. After the insertion of the Crown-Nut do avoid heat treatments, galvanization and other heating operations that might compromise the characteristics of the product. The possible presence of cracks due to the deformation's production process of the threaded assembly bush, are not to be considered defective and do not compromise the functionality of the Crown-nut installed.



ITT2T/M 8/19,5