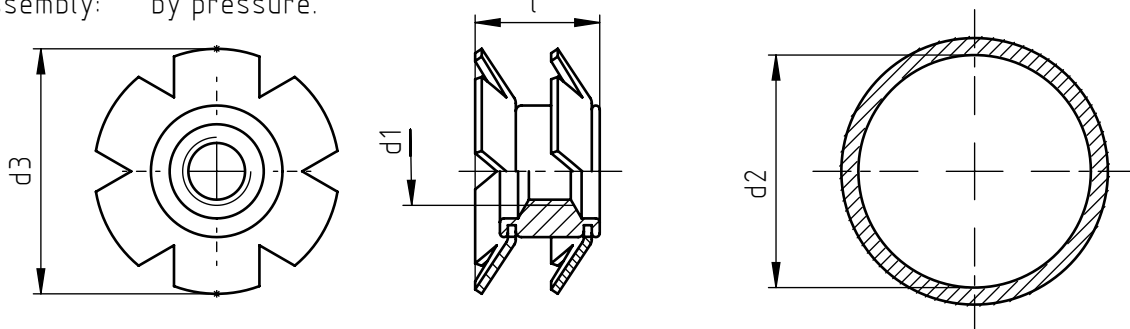


Application: at the end of square metallic and non-metallic tubes.
Assembly: by pressure.



code	d1	d2 *	d3	l
ITT2S/M 6/11.8	M 6	11,8 ÷ 12,2	12,8	12,5
ITT2S/M 6/12.6		12,6 ÷ 13,2	13,6	10
ITT2S/M 6/13.2		13,2 ÷ 13,8	14,7	12,5
ITT2S/M 6/13.8		13,8 ÷ 14,2	14,7	12,5
ITT2S/M 6/15.2		15,2 ÷ 16,1	17	10
ITT2S/M 6/15.7		15,7 ÷ 17,1	18,1	9,4
ITT2S/M 6/16.4		16,4 ÷ 17,7	18,7	9,5
ITT2S/M 6/17.9		17,9 ÷ 19,3	19,7	9,5
ITT2S/M 6/18.9		18,9 ÷ 20,2	21	9,5
ITT2S/M 6/19.5		19,5 ÷ 20,9	21,7	11
ITT2S/M 6/21.4		21,4 ÷ 22,4	23,2	10
ITT2S/M 6/22.1		22,1 ÷ 23,4	24,6	10
ITT2S/M 6/22.7		22,7 ÷ 24,0	25,4	10,5
ITT2S/M 6/24.6		24,6 ÷ 25,6	26,6	9,5
ITT2S/M 6/25.3		25,3 ÷ 26,6	27,6	10
ITT2S/M 6/26		26,0 ÷ 28,0	28,4	10
ITT2S/M 6/28.4		28,4 ÷ 29,8	30,6	11,5
ITT2S/M 6/29.8		29,8 ÷ 30,8	31,8	10
ITT2S/M 6/31.7		31,7 ÷ 32,9	33,8	13
ITT2S/M 6/36		36,0 ÷ 38,0	39	15,3
ITT2S/M 8/15.2	M 8	15,2 ÷ 16,1	17	12,5
ITT2S/M 8/15.7		15,7 ÷ 17,1	18,1	12,5
ITT2S/M 8/16.4		16,4 ÷ 17,7	18,7	12,4
ITT2S/M 8/17.9		17,9 ÷ 19,3	20	13
ITT2S/M 8/19.5		19,5 ÷ 20,9	21,5	14,5
ITT2S/M 8/21.4		21,4 ÷ 22,4	23,4	13
ITT2S/M 8/22.7		22,7 ÷ 24,0	25,4	14
ITT2S/M 8/24.6		24,6 ÷ 25,6	26,5	13,3
ITT2S/M 8/25.3		25,3 ÷ 26,6	27,6	13,5
ITT2S/M 8/26		26,0 ÷ 28,0	28,4	13
ITT2S/M 8/28.4		28,4 ÷ 29,8	30,6	15
ITT2S/M 8/29.8		29,8 ÷ 30,8	31,8	14
ITT2S/M 8/31.7		31,7 ÷ 32,9	33,6	15
ITT2S/M 8/34.8		34,8 ÷ 36,1	37	16
ITT2S/M 8/36		36,0 ÷ 38,0	39	15,3
ITT2S/M 8/38.4		38,4 ÷ 40,4	41,3	15,5
ITT2S/M 8/41.4		41,4 ÷ 42,4	43,5	16,4
ITT2S/M 8/47,5		47,5 ÷ 48,8	50	17

*For notes see page 2

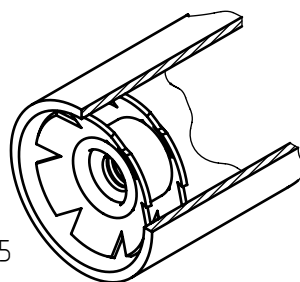
SPECIALINSERT® COMMITS ITSELF TO CONTINUOUSLY IMPROVE ITS PRODUCTS. IT RESERVES THE RIGHT TO CHANGE THEIR TECHNICAL AND STRUCTURAL CHARACTERISTICS WITHOUT PRIOR NOTICE. ALL RIGHTS ARE RESERVED AND THE DUPLICATE, EVEN PARTIAL OF THESE DOCUMENTS, AS WELL AS ITS DISTRIBUTION TO THIRD PARTIES ARE FORBIDDEN, UNLESS OTHERWISE AND EXPRESSLY AUTHORIZED BY SPECIALINSERT®.

code	d1	d2 *	d3	l
ITT2S/M10/17.9	M10	17,9 ÷ 19,3	20,3	13
ITT2S/M10/18.9		18,9 ÷ 20,2	21	12,5
ITT2S/M10/19.5		19,5 ÷ 20,9	21,7	12,5
ITT2S/M10/21.4		21,4 ÷ 22,4	23,2	13,5
ITT2S/M10/22.1		22,1 ÷ 23,4	25	14
ITT2S/M10/24.6		24,6 ÷ 25,6	26,2	13,8
ITT2S/M10/26		26,0 ÷ 28,0	28,9	15
ITT2S/M10/28.4		28,4 ÷ 29,8	30,7	13,5
ITT2S/M10/31.7		31,7 ÷ 32,9	33,8	14,3
ITT2S/M10/34.8		34,8 ÷ 36,1	37,3	16,5
ITT2S/M10/36		36,0 ÷ 38,0	39	15,2
ITT2S/M10/38.4		38,4 ÷ 40,4	41,6	16
ITT2S/M10/41.4		31,4 ÷ 42,4	43,5	16,4
ITT2S/M10/47.5		47,5 ÷ 48,8	50	17
ITT2S/M10/56		56,0 ÷ 58,0	60	16,8

Dimensions and images are not binding, expressed in mm.

Standard
 On demand
 Not manufactured

Material: steel
 Example: 2 crowns without flange insert for round tubes, M 6 threaded, internal diameter 20,5 mm: ITT2S/M 6/19,5



ITT2S/M 6/19,5

*It is advisable to carry out some preliminary assembling tests in order to determine the best product. After the insertion of the Crown-Nut do avoid heat treatments, galvanization and other heating operations that might compromise the characteristics of the product.
 The possible presence of cracks due to the deformation's production process of the threaded assembly bush, are not to be considered defective and do not compromise the functionality of the Crown-nut installed.