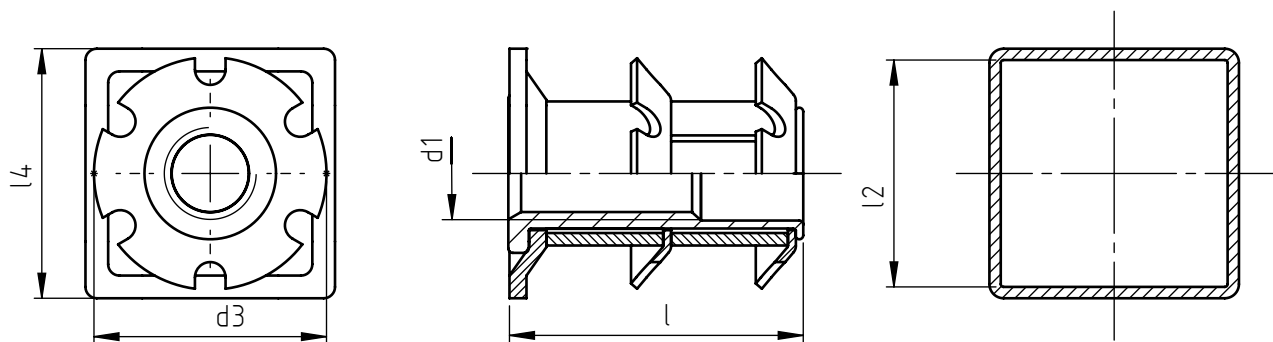


Application: at the end of square metallic and non-metallic tubes.  
 Assembly: by pressure.

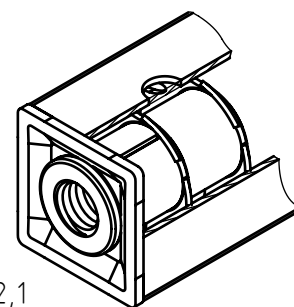


code	d1	l2*	d3	l	l4
ITT2Q/M 8/15.7	M 8	15,7 ÷ 17,1	18,1	26	19
ITT2Q/M 8/18.9		18,9 ÷ 20,2	20,9		22
ITT2Q/M 8/22.1		22,1 ÷ 23,4	24,7		25
ITT2Q/M 8/25.3		25,3 ÷ 26,6	27,5		28
ITT2Q/M 8/26.6		26,6 ÷ 27,6	28,9		30
ITT2Q/M 8/28.4		28,4 ÷ 29,8	30,7		32
ITT2Q/M 8/34.8		34,8 ÷ 36,1	37,9		38
ITT2Q/M 8/47.5		47,5 ÷ 48,8	50		50
ITT2Q/M10/22.1	M10	22,1 ÷ 23,4	24,7	26	25
ITT2Q/M10/26.6		26,6 ÷ 27,6	28,8		30
ITT2Q/M10/34.8		34,8 ÷ 36,1	37,9		38
ITT2Q/M 8/47.5		47,5 ÷ 48,8	50		50

Dimensions and images are not binding, expressed in mm.

Standard
  On demand
  Not manufactured

Material: steel  
 Example: 2 crowns flange insert for square tubes, M 8 threaded, tube internal dimension 23x23 mm: ITT2Q/M 8/22,1



ITT2Q/M 8/22,1

\*It is advisable to carry out some preliminary assembling tests in order to determine the best product. After the insertion of the Crown-Nut do avoid heat treatments, galvanization and other heating operations that might compromise the characteristics of the product. The possible presence of cracks due to the deformation's production process of the threaded assembly bush, are not to be considered defective and do not compromise the functionality of the Crown-nut installed.