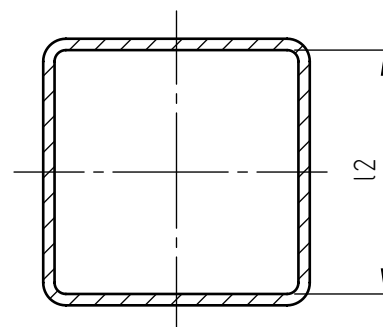
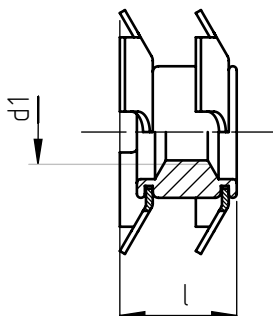
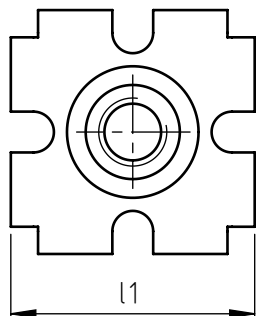


Application: at the end of square metallic and non-metallic tubes.
 Assembly: by pressure.



| code | d1 | l2* | l1 | l |
|----------------|-----|-------------|------|------|
| ITQ2S/M 6/15,7 | M 6 | 15,7 ÷ 17,1 | 18,3 | 11 |
| ITQ2S/M 6/18,9 | | 18,9 ÷ 20,2 | 21,6 | 10 |
| ITQ2S/M 6/22,1 | | 22,1 ÷ 23,4 | 24,3 | 14,2 |
| ITQ2S/M 6/26 | | 26,0 ÷ 28,0 | 29,2 | 12 |
| ITQ2S/M 8/15,7 | M 8 | 15,7 ÷ 17,1 | 18 | 15 |
| ITQ2S/M 8/18,9 | | 18,9 ÷ 20,2 | 21,4 | 14 |
| ITQ2S/M 8/22,1 | | 22,1 ÷ 23,4 | 24,3 | 13,8 |
| ITQ2S/M 8/26 | | 26,0 ÷ 28,0 | 29,1 | 16,2 |
| ITQ2S/M 8/32 | | 32,0 ÷ 32,8 | 33,5 | 15 |
| ITQ2S/M 8/34,8 | | 34,8 ÷ 36,1 | 37,4 | 17,3 |

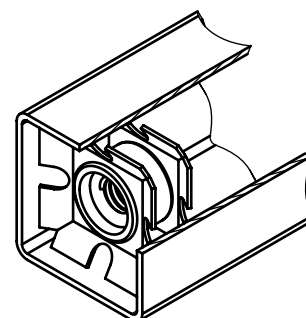
Dimensions and images are not binding, expressed in mm.

Standard

On demand

Not manufactured

Material: steel
 Example: 2 crowns without flange insert for square tubes, M 6 threaded, tube internal dimension 20x20 mm:
 ITQ2S/M 6/18,9



ITQ2S/M 6/18,9

*It is advisable to carry out some preliminary assembling tests in order to determine the best product. After the insertion of the Crown-Nut do avoid heat treatments, galvanization and other heating operations that might compromise the characteristics of the product. The possible presence of cracks due to the deformation's production process of the threaded assembly bush, are not to be considered defective and do not compromise the functionality of the Crown-nut installed.