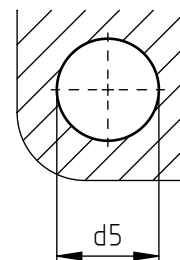
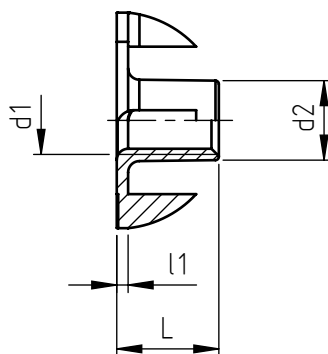
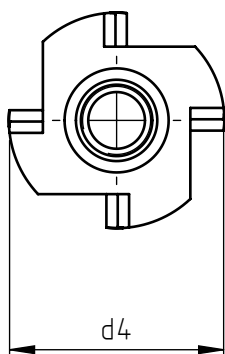


Applications: wood and derivatives.
 Assembly: by pressure.



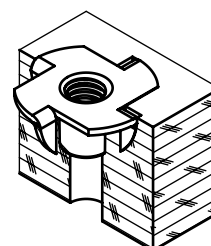
code	metric thread d1	external diameter d2	total length L	crown diameter d4	crown thickness l1	hole diameter recommended *
M 03	M 3	4,3	5	13	0,8	4,3
GN06 0040.12	M 4	5,3	6	15	1,0	5,3
GN08 0050.12	M 5	6,1	8	17	1,1	6,1
GN09 0060.12	M 6	7,5	9	19	1,3	7,5
GN11 0080.12	M 8	9,2	11	22	1,4	9,3
GN12 0100.12	M10	11,2	12	25	1,5	11,2

* For a correct usage of the product it is advisable to carry out some preliminary assembling tests to determine the correct hole diameter according to the receiving material.

Non binding dimensions, expressed in mm.

Standard
 On demand

Material: steel
 Finishing: zinc-plated
 Tolerances: where not specified by piece, degree of accuracy : $\pm 0,3$ mm.
 Example: griff nut zinc-plated steel,
 M5 thread:



GN08 0050.12