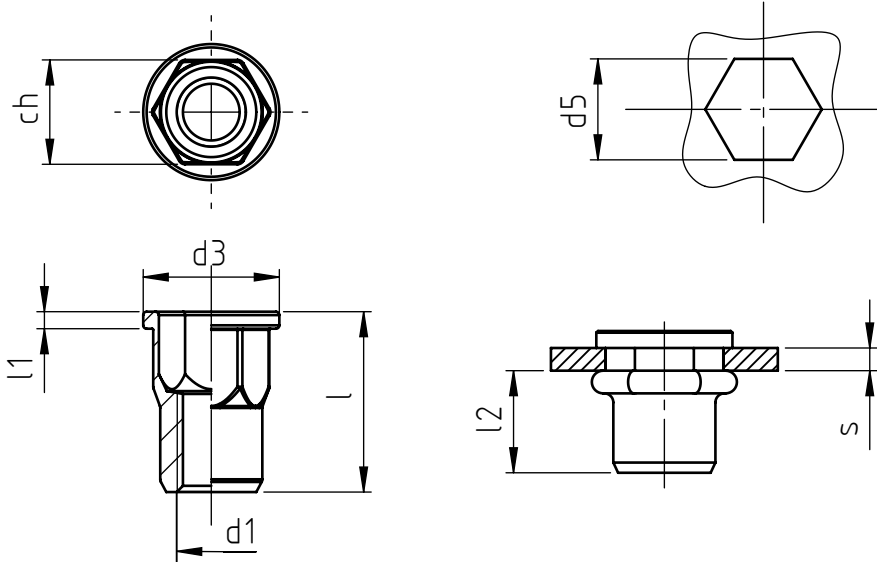


Application: metal and not metal sheets.  
Assembly: with special hand or pneumatic tools.



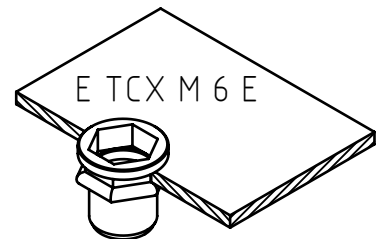
code	s grip	l	d1 6H	ch	d3	l1 ~	d5 +0,15 0	l2 *
E TCX M 4 E	0,5 ÷ 2,5	12	M 4	6	9,0	1,0	6	7
E TCX M 5 E	0,5 ÷ 3,0	13	M 5	7	10,0	1,0	7	7,5
E TCX M 6 E	0,5 ÷ 3,0	15,5	M 6	9	12,0	1,5	9	8,5
E TCX M 8 E	0,5 ÷ 3,0	17,5	M 8	11	14,5	1,5	11	11
E TCX M10 E	1,0 ÷ 3,5	21,0	M10	13	16,5	2,0	13	13,5

Non binding dimensions, expressed in mm.

\* Dimension determined from the average of the grip "s" min and max values.

Standard
  On demand
  Not manufactured

Material: stainless steel  
 Finishing: natural  
 Tolerance: where not specified, degree of accuracy (coarse) according to UNI EN 22768-1  
 Thread: ISO 6 H metric  
 Example: blind threaded nut, cylindrical head, semi-hexagonal shank, stainless steel, grip 2,0 mm, M 6 thread:  
 E TCX M 6 E



SPECIALINSERT® COMMITS ITSELF TO CONTINUOUSLY IMPROVE ITS PRODUCTS. IT RESERVES THE RIGHT TO CHANGE THEIR TECHNICAL AND STRUCTURAL CHARACTERISTICS WITHOUT PRIOR NOTICE. ALL RIGHTS ARE RESERVED AND THE DUPLICATION, EVEN PARTIAL, OF THESE DOCUMENTS, AS WELL AS ITS DISTRIBUTION TO THIRD PARTIES ARE FORBIDDEN, UNLESS OTHERWISE AND EXPRESSLY AUTHORIZED BY SPECIALINSERT.