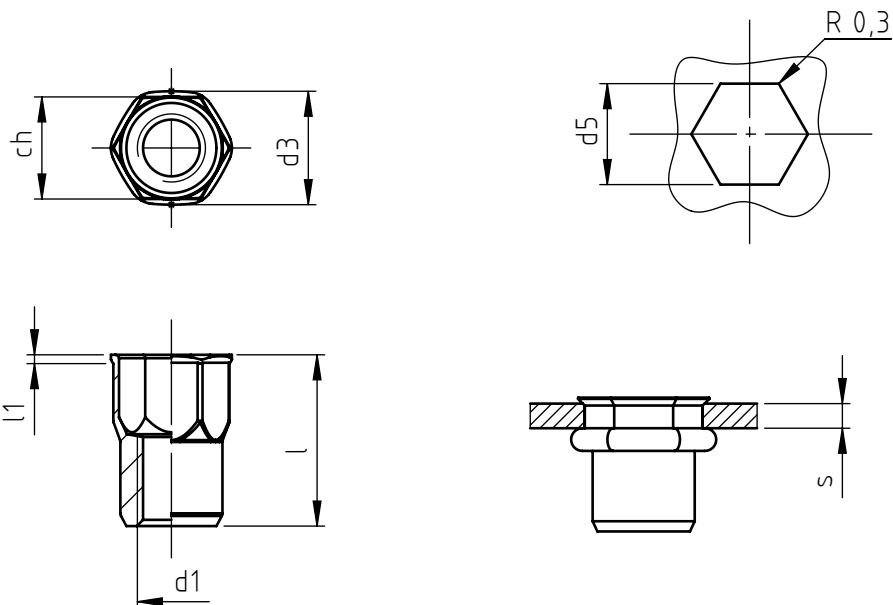


Application: metal and not metal sheets.
 Assembly: with special hand or pneumatic tools.



code	s grip	l	d1	ch	d3	l1	d5 +0,15 0
E TFM M 3/K	0,5 ÷ 2,0	9,0	M 3	5,0	6,0	0,5	5,0
E TFM M 4/K	0,5 ÷ 2,5	11,0	M 4	6,0	7,0	0,5	6,0
E TFM M 5/K	0,5 ÷ 3,0	12,0	M 5	7,0	8,0	0,5	7,0
E TFM M 6/K	0,5 ÷ 3,0	14,0	M 6	9,0	10,0	0,5	9,0
E TFM M 8/K	0,5 ÷ 3,0	16,0	M 8	11,0	12,0	0,5	11,0
E TFM/L M 8/K	3,0 ÷ 5,0	18,5	M 8	11,0	12,0	0,5	11,0
E TFM M10/K	1,0 ÷ 3,5	19,0	M10	13,0	14,2	0,7	13,0

Non binding dimensions, expressed in mm.



Standard



On demand



Not manufactured

Material: stainless steel AISI 316

Finishing: natural

Example: blind thread nut, low profile head
 semi-hexagonal shank,
 stainless steel 316, grip 2,0 mm,
 M 6 thread:

E TFM M 6/K

