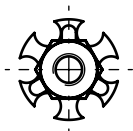
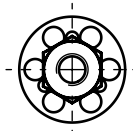


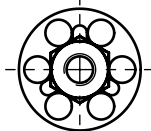
Application: fiberglass, composite materials and other.
Assembly: bonding, lamination, moulding.



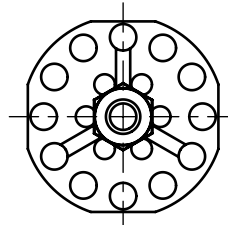
T1900=∅19



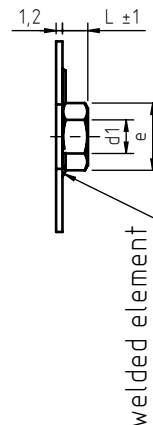
T2000=∅20



T2300=∅23



T3800=∅38



code	thread d1	hex key	e	L
DRP03T1900040. _	M 4	7	7,8	3,2
DRP03T2000040. _				
DRP03T2300040. _				
DRP03T3800040. _				
DRP04T1900050. _	M 5	8	8,9	4
DRP04T2000050. _				
DRP04T2300050. _				
DRP04T3800050. _				
DRP05T1900060. _	M 6	10	11,1	5
DRP05T2000060. _				
DRP05T2300060. _				
DRP05T3800060. _				
DRP06T2000080. _	M 8	13	14,4	6,5
DRP06T2300080. _				
DRP06T3800080. _				
DRP08T2300100. _	M 10	17	19,0	8
DRP08T3800100. _				

For M4, M5 and M6
threads
see standard
articles on
"DFP" sheet

Non binding dimensions, expressed in mm.

Standard
 On demand
 Not manufactured

Material: steel _____,12, stainless steel AISI 316 _____,51

Finishing: steel nuts: zinc plated
stainless steel nuts AISI 316: natural

Tolerance: where not specified, coarse degree of accuracy,
according to ISO 2768-m

Thread: metric ISO 6 H

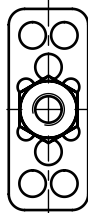
Example of designation: threaded nut with T2300 round through hole plate, M5 thread, 4 mm height, zinc plated steel:

DRP04T2300050.12

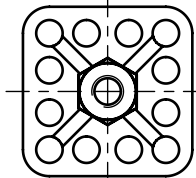


SPECIALINSERT® COMMITS ITSELF TO CONTINUOUSLY IMPROVE ITS PRODUCTS. IT RESERVES THE RIGHT TO CHANGE THEIR TECHNICAL AND STRUCTURAL CHARACTERISTICS WITHOUT PRIOR NOTICE. ALL RIGHTS ARE RESERVED AND THE DUPLICATION, EVEN PARTIAL OF THESE DOCUMENTS, AS WELL AS ITS DISTRIBUTION TO THIRD PARTIES ARE FORBIDDEN, UNLESS OTHERWISE AND EXPRESSLY AUTHORIZED BY SPECIALINSERT.

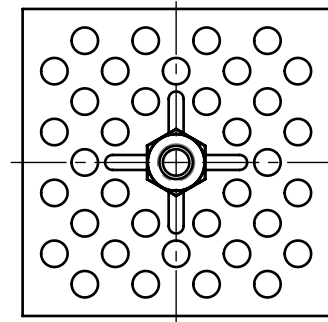
Application: fiberglass, composite materials and other.
Assembly: bonding, lamination, moulding.



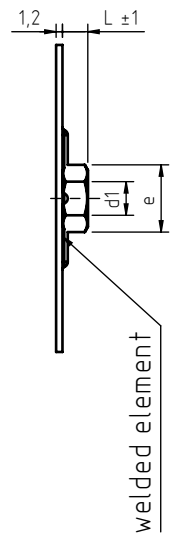
R3815=38x15



Q3232=32x32



Q5858=58x58



code	thread d1	hex key	e	L
DRP03R3815040.____	M 4	7	7,8	3,2
DRP03Q3232040.____				
DRP03Q5858040.____				
DRP04R3815050.____	M 5	8	8,9	4
DRP04Q3232050.____				
DRP04Q5858050.____				
DRP05R3815060.____	M 6	10	11,1	5
DRP05Q3232060.____				
DRP05Q5858060.____				
DRP06R3815080.____	M 8	13	14,4	6,5
DRP06Q3232080.____				
DRP06Q5858080.____				
DRP08R3815100.____	M10	17	19,0	8
DRP08Q3232100.____				
DRP08Q5858100.____				

For M4, M5 and M6
threads
see standard
articles on
"DFP" sheet

Non binding dimensions, expressed in mm.

Standard
 On demand
 Not manufactured

Material: steel _____,12, stainless steel AISI 316 _____,51

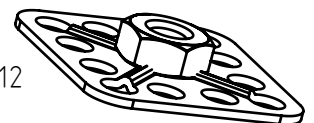
Finishing: steel nuts: zinc plated
stainless steel nuts AISI 316: natural

Tolerance: where not specified, coarse degree of accuracy,
according to ISO 2768-m

Thread: metric ISO 6 H

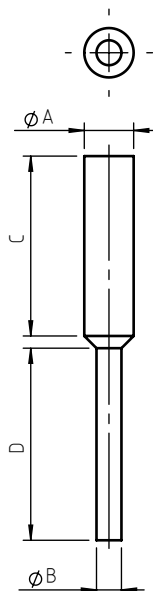
Example of
designation: threaded nut with Q3232 square through hole plate, M5
thread, 4 mm height, zinc plated steel:

DRP04Q3232050.12



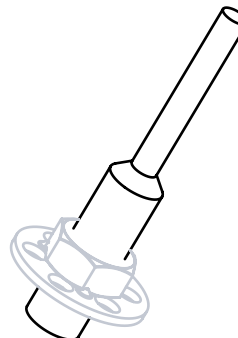
Headquarter and Export department:
Via Monfalcone 144 - 10136 - Turin - IT - Tel. +39.011.700301 - Fax +39.011.702947
Milan branch:
Via E. Cialdini 37 - 20161 - Milan - IT - Tel. +39.02.646.8476 - Fax +39.02.662.00275
Production and purchase departments:
Via E. Pavanello 1 - 30030 - Maerne di Martellago (Venice) - IT - Tel. +39.041.503.0100
Fax +39.041.503.0110

Application: silicone plugs resistant up to 315°C, ideal for the protection of through holes, thanks also to the handle that allows easy extraction. Reusable.



code	For thread	A	B	C	D
MP/CPP20	M4	3,96	1,57	15,88	19,05
MP/CPP23	M5	4,80	3,10	32,10	30,25
MP/CPP37	M6	5,40	3,00	31,25	29,70
MP/CPP42	M8	7,20	3,50	25,15	25,60
MP/CPP50	M10	8,80	4,75	31,19	28,75

Non binding dimensions, expressed in mm.



SPECIAL INSERT® COMMITS ITSELF TO CONTINUOUSLY IMPROVE ITS PRODUCTS. IT RESERVES THE RIGHT TO CHANGE THEIR TECHNICAL AND STRUCTURAL CHARACTERISTICS WITHOUT PRIOR NOTICE. ALL RIGHTS ARE RESERVED AND THE DUPLICATION, EVEN PARTIAL, OF THESE DOCUMENTS, AS WELL AS ITS DISTRIBUTION TO THIRD PARTIES, ARE FORBIDDEN, UNLESS OTHERWISE AND EXPRESSLY AUTHORIZED BY SPECIAL INSERT.