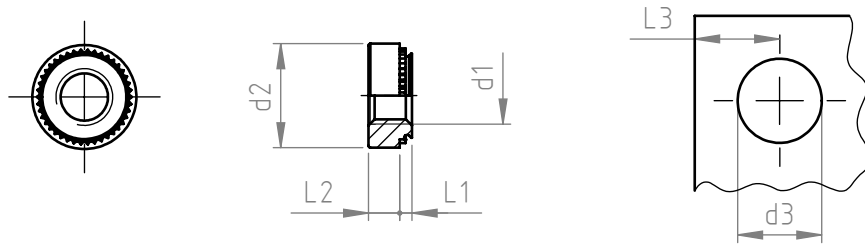


Application: metal sheets, stainless steel, light alloy, non ferrous metals.
 Assembly: by pressure.



code	sheet thickness (min.)	L 1	d1	d2 \pm 0,20	L2 \pm 0,10	d3 +0,05/0	L3
CL08 0 030. _	0,8	0,76	M 3	6,3	1,5	4,25	4,8
CL10 1 030. _	1,0	0,97					
CL14 2 030. _	1,4	1,37					
CL23 3 030. _	2,3	2,21					
CL08 0 040. _	0,8	0,76	M 4	7,9	2,0	5,4	6,9
CL10 1 040. _	1,0	0,97					
CL14 2 040. _	1,4	1,37					
CL23 3 040. _	2,3	2,21					
CL08 0 050. _	0,8	0,76	M 5	8,7	2,0	6,4	7,1
CL10 1 050. _	1,0	0,97					
CL14 2 050. _	1,4	1,37					
CL23 3 050. _	2,3	2,21					
CL14 1 060. _	1,4	1,37	M 6	11,05	4,08	8,75	8,6
CL23 2 060. _	2,3	2,21					
CL32 3 060. _	3,2	3,05	M 8	12,65	5,47	10,5	9,7
CL14 1 080. _	1,4	1,37					
CL23 2 080. _	2,3	2,21					
CL32 3 080. _	3,2	3,05					

Non binding dimensions, expressed in mm.

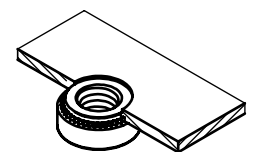
Note: anchorage pressure may vary depending on material hardness.
 The optimum pressure value is empirically achieved.
 For a correct use of the products observe specified hole diameters and tolerances.
 It is advisable to carry out some preliminary assembling tests in order to have the best assembly.

Standard
 On demand
 Not manufactured

Material: steel, stainless steel
 Finishing: nuts in steel: zinc-plated (on 80 HRB max)
 nuts in stainless steel: natural (on 70 HRB max)
 Thread: metric ISO 6H
 Example: CL self clinching nut, M 5 thread,
 sheet thickness 1,7 mm, zinc-plated steel:

_____ .12
 _____ .50

CL14 2 050.12



SPECIALINSERT COMMITS ITSELF TO CONTINUOUSLY IMPROVE ITS PRODUCTS. IT RESERVES THE RIGHT TO CHANGE THEIR TECHNICAL AND STRUCTURAL CHARACTERISTICS WITHOUT PRIOR NOTICE. ALL RIGHTS ARE RESERVED AND THE DUPLICATE, EVEN PARTIAL OF THESE DOCUMENTS, AS WELL AS ITS DISTRIBUTION TO THIRD PARTIES ARE FORBIDDEN, UNLESS OTHERWISE AND EXPRESSLY AUTHORIZED BY SPECIALINSERT.