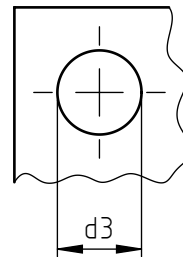
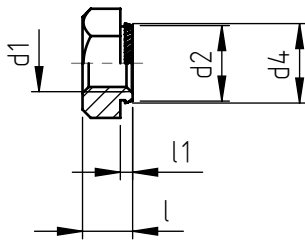
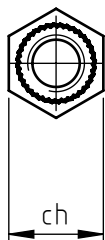


Application: metal sheets, stainless steel, light alloy, non-ferrous metal, plastic materials.
 Assembly: by pressure.



code	d1	sheet thickness (min.)	d2	d3	d4	ch	l	l1
CLE10 0 025.12	M 2,5	1,0	4,5	4,5	4,70	5,5	3,0	0,9
CLE15 0 025.12		1,5					3,0	1,4
CLE20 0 025.12		2,0					3,0	1,8
CLE10 0 030.12	M 3	1,0	4,5	4,5	4,70	5,5	3,0	0,9
CLE15 0 030.12		1,5					3,0	1,4
CLE20 0 030.12		2,0					3,0	1,8
CLE10 0 040.12	M 4	1,0	5,5	5,5	5,70	7,0	3,2	0,9
CLE15 0 040.12		1,5					3,2	1,4
CLE20 0 040.12		2,0					4,5	1,8
CLE10 0 050.12	M 5	1,0	6,5	6,5	6,75	8,0	4,0	0,9
CLE15 0 050.12		1,5					4,0	1,4
CLE20 0 050.12		2,0					5,0	1,8
CLE10 0 060.12	M 6	1,0	8,0	8,0	8,30	10,0	5,0	0,9
CLE15 0 060.12		1,5					5,0	1,4
CLE20 0 060.12		2,0					5,0	1,8
CLE20 0 080.12	M 8	2,0	10,0	10,0	10,30	13,0	6,5	1,8
CLE20 0 100.12	M 10	2,0	12,5	12,5	12,85	15,0	8,0	1,8
CLE30 0 120.12	M 12	3,0	14,5	14,5	14,85	17,0	10,0	2,8
CLE30 0 160.12	M 16	3,0	18,5	18,5	18,85	22,0	13,0	2,4
CLE40 0 200.12	M 20	4,0	23,0	23,0	23,40	27,0	16,0	3,9

Non binding dimintions, expressed in mm.



Standard

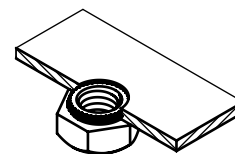


On demand



Not manufactured

Material: white zinc-plated steel (on 80 HRB max)
 Example: self clinching hexagonal nut,
 M 5 thread, sheet thickness
 1,2 mm, white zinc-plated steel:
 CLE10 0 050.12



Headquarter and Export department:
 Via Monfalcone 144 - 10136 - Turin - IT - Tel. +39.011.700301 - Fax +39.011.702947
 Milan branch:
 Via E. Cialdini 37 - 20161 - Milan - IT - Tel. +39.02.646.8476 - Fax +39.02.662.00275
 Production and purchase departments:
 Via E. Pavanello 1 - 30030 - Maerne di Martellago (Venice) - IT - Tel. +39.041.503.0100
 Fax +39.041.503.0110