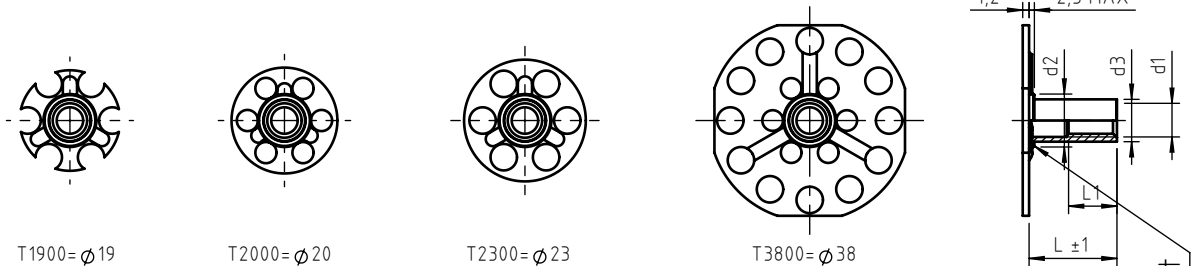


Application: fiberglass, composite materials and others.
 Assembly: bonding, rolling, moulding.



code	thread d1	d2	d3	L = bush length											L1			
				5	6	10	12	14	15	16	20	22	25	30				
BRP_T1900040._	M 4	12	8,3														up to 3 times the d1	
BRP_T2000040._																		
BRP_T2300040._																		
BRP_T3800040._																		
BRP_T1900050._	M 5	13	9,6															
BRP_T2000050._																		
BRP_T2300050._																		
BRP_T3800050._																		
BRP_T1900060._	M 6	13	9,6															
BRP_T2000060._																		
BRP_T2300060._																		
BRP_T3800060._																		
BRP_T2300080._	M 8	15	11															
BRP_T3800080._																		
BRP_T2300100._	M 10	16	12,6															
BRP_T3800100._																		

Non binding dimensions, expressed in mm.

Standard
 On demand
 Not manufactured

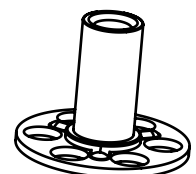
Material: steel____.12, stainless steel AISI 316____.51

Finishing: steel bush: zinc coated
 stainless steel bush AISI 316: natural

Tolerance: where not specified, coarse degree of accuracy, according to ISO 2768-m

Thread: metric ISO 6 H

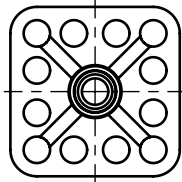
Example of designation: threaded bush with T2300 through-hole round plate, M6 thread, 20 mm length, zinc plated steel:



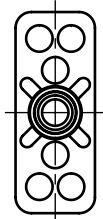
BRP20T2300060.12

SPECIALINSERT® COMMITS ITSELF TO CONTINUOUSLY IMPROVE ITS PRODUCTS. IT RESERVES THE RIGHT TO CHANGE THEIR TECHNICAL AND STRUCTURAL CHARACTERISTICS WITHOUT PRIOR NOTICE. ALL RIGHTS ARE RESERVED AND THE DUPLICATE, EVEN PARTIAL, OF THESE DOCUMENTS, AS WELL AS ITS DISTRIBUTION TO THIRD PARTIES, ARE FORBIDDEN, UNLESS OTHERWISE AND EXPRESSLY AUTHORIZED BY SPECIALINSERT.

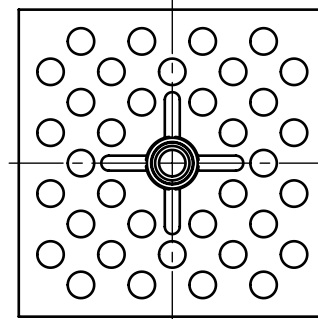
Application: fiberglass, composite materials and others.
Assembly: bonding, rolling, moulding.



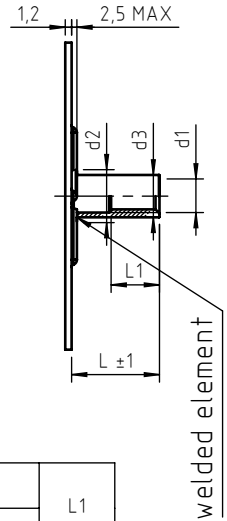
Q3232=32x32



R3815=38x15



Q5858=58x58



code	thread d1	d2	d3	L = bush lenght											L1				
				5	6	10	12	14	15	16	20	22	25	30					
BRP_Q3232040_	M4	12	8,3															up to 3 times the d1	
BRP_R3815040_																			
BRP_Q5858040_																			
BRP_Q3232050_	M5	13	9,6																
BRP_R3815050_																			
BRP_Q5858050_																			
BRP_Q3232060_	M6	13	9,6																
BRP_R3815060_																			
BRP_Q5858060_																			
BRP_Q3232080_	M8	15	11																
BRP_R3815080_																			
BRP_Q5858080_																			
BRP_Q3232100_	M10	16	12,6																
BRP_R3815100_																			
BRP_Q5858100_																			

Non binding dimensions, expressed in mm.

Standard
 On demand
 Not manufactured

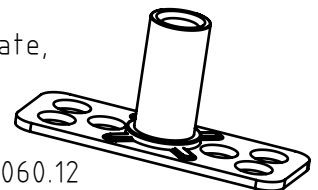
Material: steel _____,12, stainless steel AISI 316 _____,51

Finishing: steel bush: zinc coated
stainless steel bush AISI 316: natural

Tolerance: where not specified, coarse degree of accuracy,
according to ISO 2768-m

Thread: metric ISO 6 H

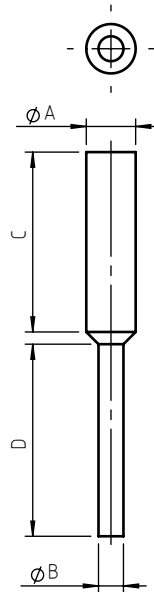
Example of designation: threaded bush with R3815 rectangular through-hole plate,
M6 thread, 15 mm length, zinc plated steel:



BRP15R3815060.12

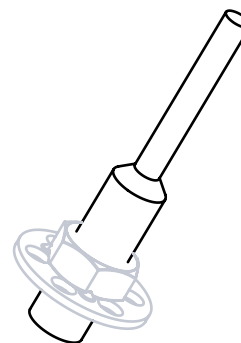
Headquarter and Export department:
Via Montalcone 144 - 10136 - Turin - IT - Tel. +39.011.700301 - Fax +39.011.702947
Milan branch:
Via E. Cialdini 37 - 20161 - Milan - IT - Tel. +39.02.646.8476 - Fax +39.02.662.00275
Production and purchase departments:
Via E. Pavanello 1 - 30030 - Maerne di Martellago (Venice) - IT - Tel. +39.041.503.0100
Fax +39.041.503.0110

Application: silicone plugs resistant up to 315°C, ideal for the protection of through holes, thanks also to the handle that allows easy extraction. Reusable.



code	For thread	A	B	C	D
MP/CPP20	M4	3,96	1,57	15,88	19,05
MP/CPP23	M5	4,80	3,10	32,10	30,25
MP/CPP37	M6	5,40	3,00	31,25	29,70
MP/CPP42	M8	7,20	3,50	25,15	25,60
MP/CPP50	M10	8,80	4,75	31,19	28,75

Non binding dimensions, expressed in mm.



Headquarter and Export department:
Via Monfalcone 144 - 10136 - Turin - IT - Tel. +39.011.700301 - Fax +39.011.702947
Milan branch:
Via E. Cialdini 37 - 20161 - Milan - IT - Tel. +39.02.646.8476 - Fax +39.02.662.00275
Production and purchase departments:
Via E. Pavanello 1 - 30030 - Maerne di Martellago (Venice) - IT - Tel. +39.041.503.0100
Fax +39.041.503.0110