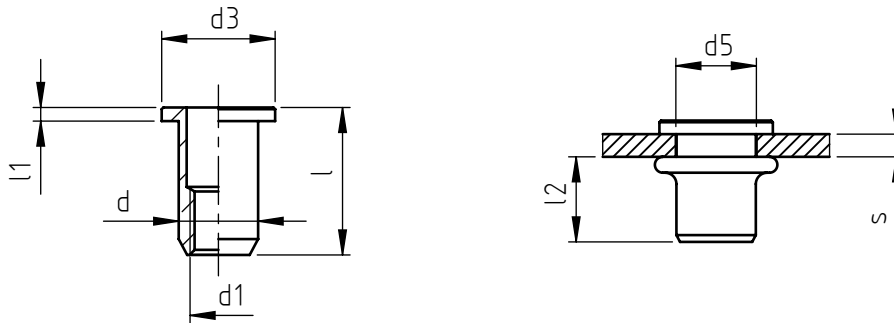


Application: metal and not metal sheets.
Assembly: with special hand or pneumatic tools.



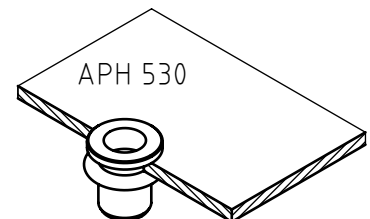
code	s grip	l	d1 6H	d	d3	l1	d5 +0,15 0	l2 *
APH 425	0,5 ÷ 2,5	11	M 4	6	9	1	6	5,7
APH 440	2,5 ÷ 4,0	13						
APH 530	0,5 ÷ 3,0	13	M 5	7	10	1,2	7	7,5
APH 550	3,0 ÷ 5,0	15,5						
APH 620	0,5 ÷ 2,3	14,5	M 6	9	12	1,5	9	8
APH 640	2,3 ÷ 4,0	16						
APH 660	4,0 ÷ 6,0	17,5						
APH 830	0,5 ÷ 3,5	17,5	M 8	11	15	1,5	11	9,7
APH 860	3,5 ÷ 6,0	20						

Non binding dimensions, expressed in mm.

* Dimension determined from the average of the grip "s" min and max values.

Standard
 On demand
 Not manufactured

Material: light alloy
 Finishing: natural
 Tolerances: according to UNI standards EN 22768-1
 Thread: ISO 6 H metric
 Example: blind threaded nut, cylindrical head,
 round shank, light alloy, grip
 2,0 mm, M 5 thread:
 APH 530



SPECIALINSERT COMMITS ITSELF TO CONTINUOUSLY IMPROVE ITS PRODUCTS. IT RESERVES THE RIGHT TO CHANGE THEIR TECHNICAL AND STRUCTURAL CHARACTERISTICS WITHOUT PRIOR NOTICE. ALL RIGHTS ARE RESERVED AND THE DUPLICATE, EVEN PARTIAL OF THESE DOCUMENTS, AS WELL AS ITS DISTRIBUTION TO THIRD PARTIES ARE FORBIDDEN, UNLESS OTHERWISE AND EXPRESSLY AUTHORIZED BY SPECIALINSERT.