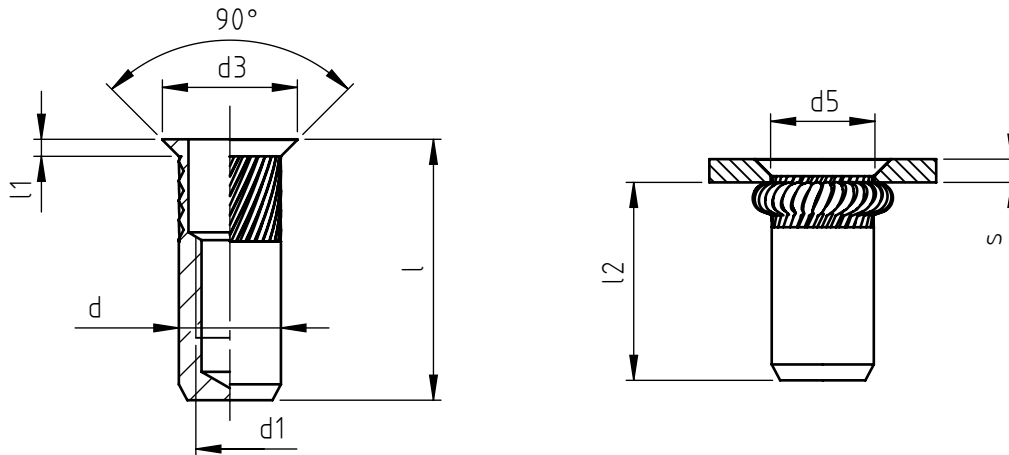


Application: metal and not metal sheets.
Assembly: with special hand or pneumatic tools.



code	steel	stainless steel	s grip	l	d1 6H	d	d3	l1 ~	d5 +0,15 0	l2 *
9205A/M 3/ __Zl	8Zl	XZl	1,6 ÷ 3,5	13,5	M 3	5	8	1,5	5	9
9205B/M 3/ __Zl	8Zl	XZl	3,5 ÷ 5,0	15						
9205A/M 4/ __Zl	8Zl	XZl	1,6 ÷ 3,5	15,5	M 4	6	9	1,5	6	10,5
9205B/M 4/ __Zl	8Zl	XZl	3,5 ÷ 5,5	17,5						
9205A/M 5/ __Zl	8Zl	XZl	1,6 ÷ 4,0	18,5	M 5	7	10	1,5	7	13
9205B/M 5/ __Zl	8Zl	XZl	4,0 ÷ 6,0	20,5						
9205A/M 6/ __Zl	8Zl	XZl	1,6 ÷ 4,5	23	M 6	9	12	1,5	9	17,5
9205B/M 6/ __Zl	8Zl	XZl	4,5 ÷ 7,0	25,5						
9205A/M 8/ __Zl	8Zl	XZl	1,6 ÷ 5,0	25,5	M 8	11	14	1,5	11	19
9205B/M 8/ __Zl	8Zl	XZl	5,0 ÷ 7,5	28						
9205A/M10/ __Zl	8Zl	XZl	1,6 ÷ 5,0	30	M10	13	16	1,5	13	23
9205B/M10/ __Zl	8Zl	XZl	5,0 ÷ 7,5	32,5						
9205A/M12/ __Zl	8Zl	XZl	1,6 ÷ 5,0	36	M12	15	18	1,5	15	29
9205B/M12/ __Zl	8Zl	XZl	5,0 ÷ 8,0	39						

Non binding dimensions, expressed in mm.

* Dimension determined from the average of the grip "s" min and max values.

For type B, the knurling might start under the head.

Standard
 On demand
 Not manufactured

Ref. UNI 9205 standard

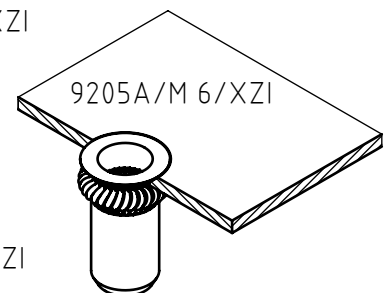
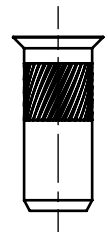
Material: steel nr.1.0718 _____ / _____ /8Zl
 stainless steel nr.1.4-305 _____ / _____ /XZl

Finishing: steel: white zinc-plated
 stainless steel: natural

Tolerances: according to UNI standards EN 22768-1

Thread: ISO 6 H metric

Example: blind threaded nut, countersunk head,
 round close-end knurled shank,
 stainless steel, grip 2,0 mm, M 6 thread: 9205A/M 6/XZl



SPECIALINSERT COMMITS ITSELF TO CONTINUOUSLY IMPROVE ITS PRODUCTS. IT RESERVES THE RIGHT TO CHANGE THEIR TECHNICAL AND STRUCTURAL CHARACTERISTICS WITHOUT PRIOR NOTICE. ALL RIGHTS ARE RESERVED AND THE DUPLICATION, EVEN PARTIAL, OF THESE DOCUMENTS, AS WELL AS ITS DISTRIBUTION TO THIRD PARTIES ARE FORBIDDEN, UNLESS OTHERWISE AND EXPRESSLY AUTHORIZED BY SPECIALINSERT.