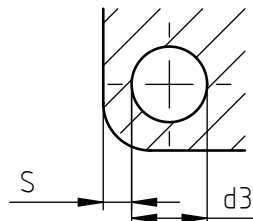
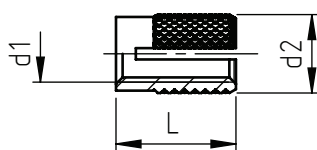


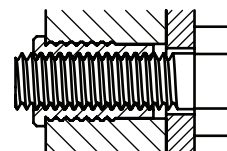
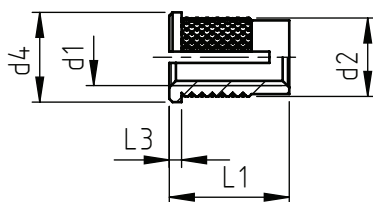
Applications: thermosetting materials.
Assembly: by pressure through expansion anchorage.

841



code	metric thread	external diameter	total length	minimum wall thickness	hole diameter
	d1	d2	L	S	d3
841 0020.80	M 2	3,55	4,0	2,4	3,2 ÷ 3,3
841 0025.80	M 2,5	4,3	4,8	3,2	4,0 ÷ 4,1
841 0030.80	M 3	4,3	4,8	3,2	4,0 ÷ 4,1
841 0035.80	M 3,5	5,1	6,4	3,6	4,7 ÷ 4,8
841 0040.80	M 4	6	8,0	4,0	5,5 ÷ 5,6
841 0050.80	M 5	6,8	9,5	4,8	6,3 ÷ 6,4
841 0060.80	M 6	8,4	12,7	6,0	7,9 ÷ 8,0
841 0080.80	M 8	9,9	12,7	7,0	9,5 ÷ 9,6

842



code	metric thread	external diameter	total length	head diameter	head thickness	minimum wall thickness	hole diameter
	d1	d2	L1	d4	L3	S	d3
842 0020.80	M 2	3,55	4,0	4,8	0,6	2,4	3,2 ÷ 3,3
842 0025.80	M 2,5	4,3	4,8	5,6	0,6	3,2	4,0 ÷ 4,1
842 0030.80	M 3	4,3	4,8	5,6	0,6	3,2	4,0 ÷ 4,1
842 0035.80	M 3,5	5,1	6,4	6,4	0,8	3,6	4,7 ÷ 4,8
842 0040.80	M 4	6	8,0	7,2	0,8	4,0	5,5 ÷ 5,6
842 0050.80	M 5	6,8	9,5	8,0	1,0	4,8	6,3 ÷ 6,4
842 0060.80	M 6	8,4	12,7	9,5	1,3	6,0	7,9 ÷ 8,0
842 0080.80	M 8	9,9	12,7	11,0	1,3	7,0	9,5 ÷ 9,6

Non binding dimensions, expressed in mm.
For a correct usage of the product it is advisable to carry out some preliminary assembling tests to determine the correct hole diameter.

█ Standard

▭ On demand

▬ Not manufactured

Material: brass
Finishing: natural
Tolerances: ISO 2768 - m
Threading d1: ISO 6 H
Example: insert B-Lok with head, knurled,
M5 thread, brass: 842 0050.80

