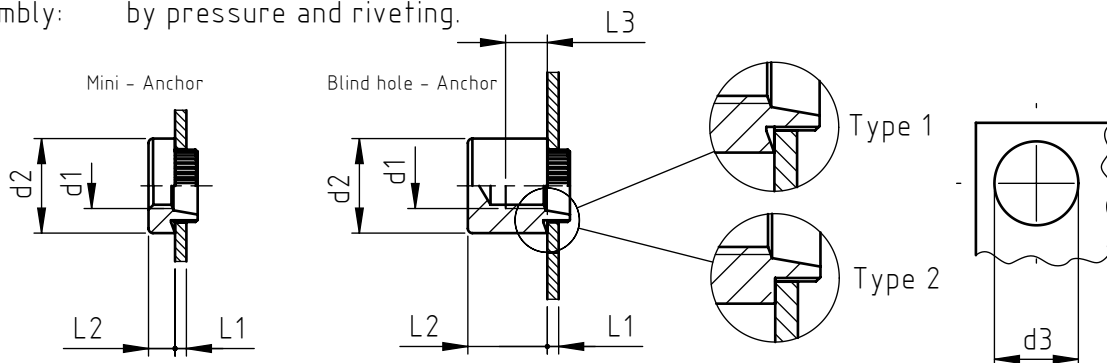


Applications: metal sheets, stainless steel, light alloy, non-ferrous metals, plastic materials.  
 Assembly: by pressure and riveting.



Thanks to their reduced sizes, Mini-Anchor nuts allow saving weight and space.

code	sheet thickness L1	type
721 0 ____	0,5 ÷ 0,6	1
724 0 ____	0,8 ÷ 1,0	1
726 0 ____	1,4 ÷ 1,6	1
728 0 ____	2,0 ÷ 2,2	2
729 0 ____	2,3 ÷ 2,5	2
731 0 ____	2,9 ÷ 3,1	2

code	metric thread d1	external diameter d2	nut height L2	hole diameter d3	weight (*) Kg/100
_____020__	M 2	5,0	2,3	3,5	0,040
_____025__	M 2,5	5,5	2,8	4,2	0,050
_____030__	M 3	5,5	2,8	4,2	0,040
_____040__	M 4	7,0	3,2	5,5	0,080
_____050__	M 5	8,5	3,8	6,5	0,120
_____060__	M 6	10,0	5,1	7,7	0,220
_____080__	M 8	12,0	6,5	9,7	0,350

(\*) Approx. values found on the weight of the nuts 726 \_\_\_\_\_.12

#### Blind hole-Anchor

code	sheet thickness L1	type
744 0 ____	0,8 ÷ 1,0	1
745 0 ____	1,1 ÷ 1,3	1
746 0 ____	1,4 ÷ 1,6	1
748 0 ____	2,0 ÷ 2,2	2
749 0 ____	2,3 ÷ 2,5	2
751 0 ____	2,9 ÷ 3,1	2
754 0 ____	3,8 ÷ 4,0	2
758 0 ____	5,0	2

code	metric thread d1	external diameter d2	nut height L2	hole diameter d3(a) d3(b)	thread depth
_____030__	M3	8,0	8,5	6,0 5,8	3,0
_____040__	M 4	9,5	9,0	7,0 6,8	4,0
_____050__	M 5	11,0	10,0	8,4 8,2	5,0
_____060__	M 6	12,5	10,5	9,7 9,5	5,5
_____080__	M 8	16,0	12,0	13,2 12,9	5,5
_____100__	M10	19,0	16,5	15,5 15,2	6,0
_____120__	M12	25,4	19,0	19,6 19,3	7,0

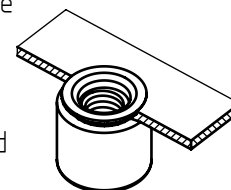
(1) type 1: 20° turned contacting surface (2) type 2: flat contacting surface

Hole d3: (a) For standard applications

(b) For high tensile stress applications

Non binding dimensions, expressed in mm.

Standard
  On demand
  Not manufactured



Material: steel, stainless steel, light alloy, brass  
 Finishing: steel: natural (on demand) \_\_\_\_\_ .10  
                   steel: zinc-plated \_\_\_\_\_ .12  
                   stainless steel: natural (on demand) \_\_\_\_\_ .50  
                   light alloy: natural (on demand) \_\_\_\_\_ .70  
                   brass: natural (on demand) \_\_\_\_\_ .80

Tolerances: ISO 2768 - m  
 Thread d1: metric ISO 6 H  
 Example: Anchor closed rivet bushing, M5 thread,  
                   sheet thickness 1,5 mm, zinc-plated steel: 746 0 050.12

SPECIALINSERT® COMMITS ITSELF TO CONTINUOUSLY IMPROVE ITS PRODUCTS. IT RESERVES THE RIGHT TO CHANGE THEIR TECHNICAL AND STRUCTURAL CHARACTERISTICS WITHOUT PRIOR NOTICE. ALL RIGHTS ARE RESERVED AND THE DUPLICATE, EVEN PARTIAL, OF THESE DOCUMENTS, AS WELL AS ITS DISTRIBUTION TO THIRD PARTIES, ARE FORBIDDEN, UNLESS OTHERWISE AND EXPRESSLY AUTHORIZED BY SPECIALINSERT.