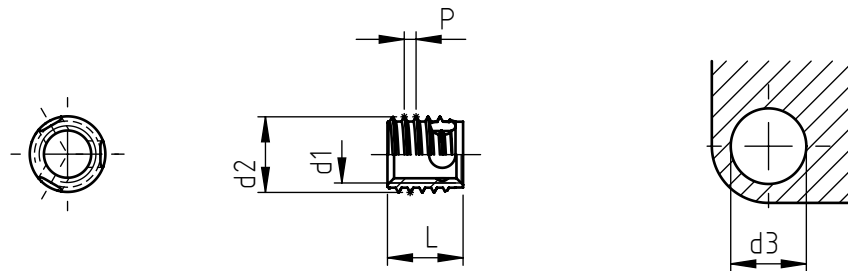


Application: light alloy, no-ferrous metals, cast iron, plastic materials, resins.
Assembly: by special equipment.



code	metric thread	special external thread		total length L	approx. hole diameter d3		min. hole depth
	d1	d2	P		plastic	metal, light alloy	
347 0040._	M 4	6	0,7	6	5,4 ÷ 5,6	5,6 ÷ 5,7	8
348 0040._				8			10
347 0050._	M 5	6,5	0,8	7	6,0 ÷ 6,1	6,1 ÷ 6,2	9
348 0050._				10			13
347 0060._	M 6	8	1	8	7,4 ÷ 7,6	7,5 ÷ 7,7	10
348 0060._				12			15
347 0080._	M 8	10	1,25	9	9,3 ÷ 9,5	9,4 ÷ 9,6	11
348 0080._				14			17
347 0100._	M 10	12	1,5	10	11,1 ÷ 11,3	11,2 ÷ 11,5	13
348 0100._				18			22
347 0120._	M 12	14	1,75	12	13,1 ÷ 13,3	13,2 ÷ 13,5	15
348 0120._				22			26

Non binding dimensions, expressed in mm.
In order to use correctly the products, we suggest to carry out some preliminary assembly tests to determine the right hole.

Standard
 On demand
 Not manufactured

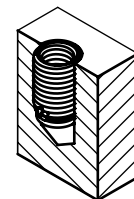
Material: steel _____ .16
 austenitic stainless steel 1.4305 (from M4 to M8) _____ .50

Finishing: steel bushings: zinc-plated
 stainless steel bushings: natural

Tolerances: ISO 2768 - m

Threading d1: ISO 6 H metric

Example: self-tapping Ensat® series 348
 M5 thread, zinc-plated steel: 348 0050.16



SPECIALINSERT® COMMITS ITSELF TO CONTINUOUSLY IMPROVE ITS PRODUCTS. IT RESERVES THE RIGHT TO CHANGE THEIR TECHNICAL AND STRUCTURAL CHARACTERISTICS WITHOUT PRIOR NOTICE. ALL RIGHTS ARE RESERVED AND THE DUPLICATE, EVEN PARTIAL OF THESE DOCUMENTS, AS WELL AS ITS DISTRIBUTION TO THIRD PARTIES ARE FORBIDDEN, UNLESS OTHERWISE AND EXPRESSLY AUTHORIZED BY SPECIALINSERT.