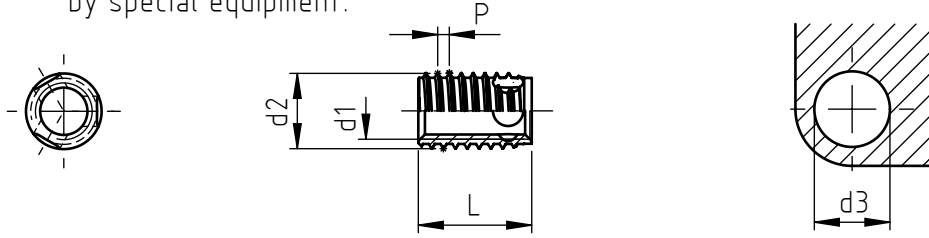


Application: light alloy, no-ferrous metals, cast iron, plastic materials,
resins.
Assembly: by special equipment.



code	metric thread	special external thread		total length	approx. hole diameter d 3			min. hole depth
		d2	P		light alloy Rm<250 <150 HB plastic	light alloy Rm<350 c.iron<200 HB hard plastic	light alloy Rm>350 c.iron>200HB, brass, no ferrous metal	
307 0030	M 3	5	0,6	4	4,6 ÷ 4,7	4,7	4,7 ÷ 4,8	6
308 0030				6				8
307 0035	M 3,5	6	0,8	5	5,5 ÷ 5,6	5,6	5,6 ÷ 5,7	7
308 0035				8				10
307 0040	M 4	6,5	0,8	6	6,0 ÷ 6,1	6,1	6,1 ÷ 6,2	8
308 0040				8				10
307 0050	M 5	8	1	7	7,4 ÷ 7,5	7,5 ÷ 7,6	7,6 ÷ 7,7	9
308 0050				10				13
307 0060	M 6	10	1,25	8	9,3 ÷ 9,4	9,4 ÷ 9,5	9,5 ÷ 9,6	10
308 0060				12				15
307 0080	M 8	12	1,5	9	11,1 ÷ 11,2	11,2 ÷ 11,3	11,3 ÷ 11,5	11
308 0080				14				17
307 0100	M 10	14	1,5	10	13,1 ÷ 13,2	13,2 ÷ 13,3	13,3 ÷ 13,5	13
308 0100				18				22
307 0120	M 12	16	1,75	12	15,0 ÷ 15,1	15,1 ÷ 15,2	15,2 ÷ 15,4	15
308 0120				22				26
307 0140	M 14	18	2	14	17,0 ÷ 17,1	17,1 ÷ 17,2	17,2 ÷ 17,4	17
308 0140				24				28
307 0160	M 16	20	2	14	19,0 ÷ 19,1	19,1 ÷ 19,2	19,2 ÷ 19,4	17
308 0160				24				28

Rm=ultimate tensile strength N/mm². HB=Brinell hardness

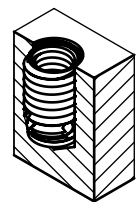
Non binding dimensions, expressed in mm.

Other threads UNC, UNF, WHITWORTH available on demand.

In order to use correctly the products, we suggest to carry out some preliminary assembly tests to determine the right hole.

Standard
 On demand
 Not manufactured

Material: steel _____ .16
 ferritic stainless steel (up to M14) 1.4105 _____ .40
 (serie 307 while stocks from M4 up to M12, serie 308 while stocks from M3 up to M16)
 austenitic stainless steel (up to M12) 1.4305 _____ .50
 Finishing: steel bushings: zinc-plated
 stainless steel bushings: natural
 Tolerances: ISO 2768 - m
 Threading d1: ISO 6 H metric
 Example: self-tapping Ensat® serie 308,
 thread M 5, zinc-plated steel: 308 0050.16



SPECIALINSERT® COMMITS ITSELF TO CONTINUOUSLY IMPROVE ITS PRODUCTS. IT RESERVES THE RIGHT TO CHANGE THEIR TECHNICAL AND STRUCTURAL CHARACTERISTICS WITHOUT PRIOR NOTICE. ALL RIGHTS ARE RESERVED AND THE DUPLICATE, EVEN PARTIAL OF THESE DOCUMENTS, AS WELL AS ITS DISTRIBUTION TO THIRD PARTIES ARE FORBIDDEN, UNLESS OTHERWISE AND EXPRESSLY AUTHORIZED BY SPECIALINSERT.