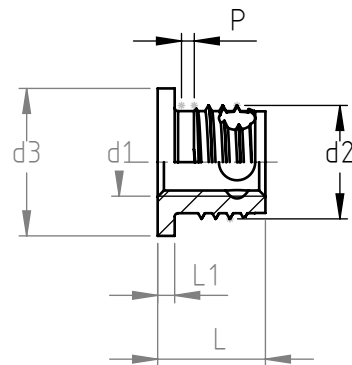


Application: light alloys, materials plastics, resins.
Assembly: by special equipment.

The head serves as a support for electrical contacts,
for simultaneous fixture of several parts;
when stress is applied against the head,
the pull-through force is significantly increased.



Code	Internal thread d1	External thread d2 P		Head diameter d3	Head height L1	Length L	Minimum borehole depth for blind holes	approx. hole diameter		
								light alloy Rm<250 <150HB plastic	light alloy Rm<350 cast iron<200HB hard-plastic	light alloy Rm>350 cast iron>200HB brass
307 1 050 ...	M 5	8	1	11	1	8	9	7,4	7,5÷7,6	7,7
308 1 050 ...						11	13			
307 1 060 ...	M 6	10	1,25	13	1,5	9,5	10	9,3	9,4÷9,5	9,6
308 1 060 ...						13,5	15			
307 1 080 ...	M 8	12	1,5	15	1,5	10,5	11	11,1	11,2÷11,3	11,5
308 1 080 ...						15,5	17			
307 1 100 ...	M10	14	1,5	17	1,5	11,5	13	13,1	13,2÷13,3	13,5
308 1 100 ...						19,5	22			

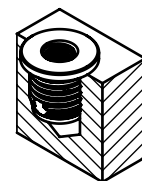
Rm = ultimate tensile strength N/mm² HB = Brinell hardness
Non binding dimensions, expressed in mm.

Internal thread UNC, UNF, Whitworth or fine thread on request

In order to use correctly the products, we suggest to carry out some preliminary assembly tests to determine the right hole.

Standard
 On demand
 -- Not manufactured

Material: steel _____ .16
 brass _____ .80
 Finishing: steel: zinc-plated
 brass: natural
 Tolerance: ISO 2768 - m
 Thread d1: metric ISO 6H
 Example: self-tapping Ensat series 307 1, M5 thread,
 zinc-plated steel: 307 1 050.16



Headquarter and Export department:
 Via Monfalcone 144 - 10136 - Turin - IT - Tel. +39.011.700301 - Fax +39.011.702947
 Milan branch:
 Via E. Cialdini 37 - 20126 - Milan - IT - Tel. +39.02.646.8476 - Fax +39.02.662.00275
 Production and purchase departments:
 Via E. Pavanello 1 - 30030 - Maerne di Martellago (Venice) - IT - Tel. +39.041.503.0100
 Fax +39.041.503.0110

SPECIALINSERT® COMMITS ITSELF TO CONTINUOUSLY IMPROVE ITS PRODUCTS. IT RESERVES THE RIGHT TO CHANGE THEIR TECHNICAL AND STRUCTURAL CHARACTERISTICS WITHOUT PRIOR NOTICE. ALL RIGHTS ARE RESERVED AND THE DUPLICATE, EVEN PARTIAL OF THESE DOCUMENTS, AS WELL AS ITS DISTRIBUTION TO THIRD PARTIES ARE FORBIDDEN, UNLESS OTHERWISE AND EXPRESSLY AUTHORIZED BY SPECIALINSERT.